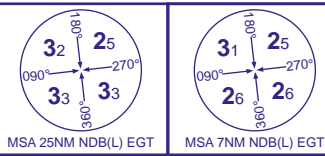
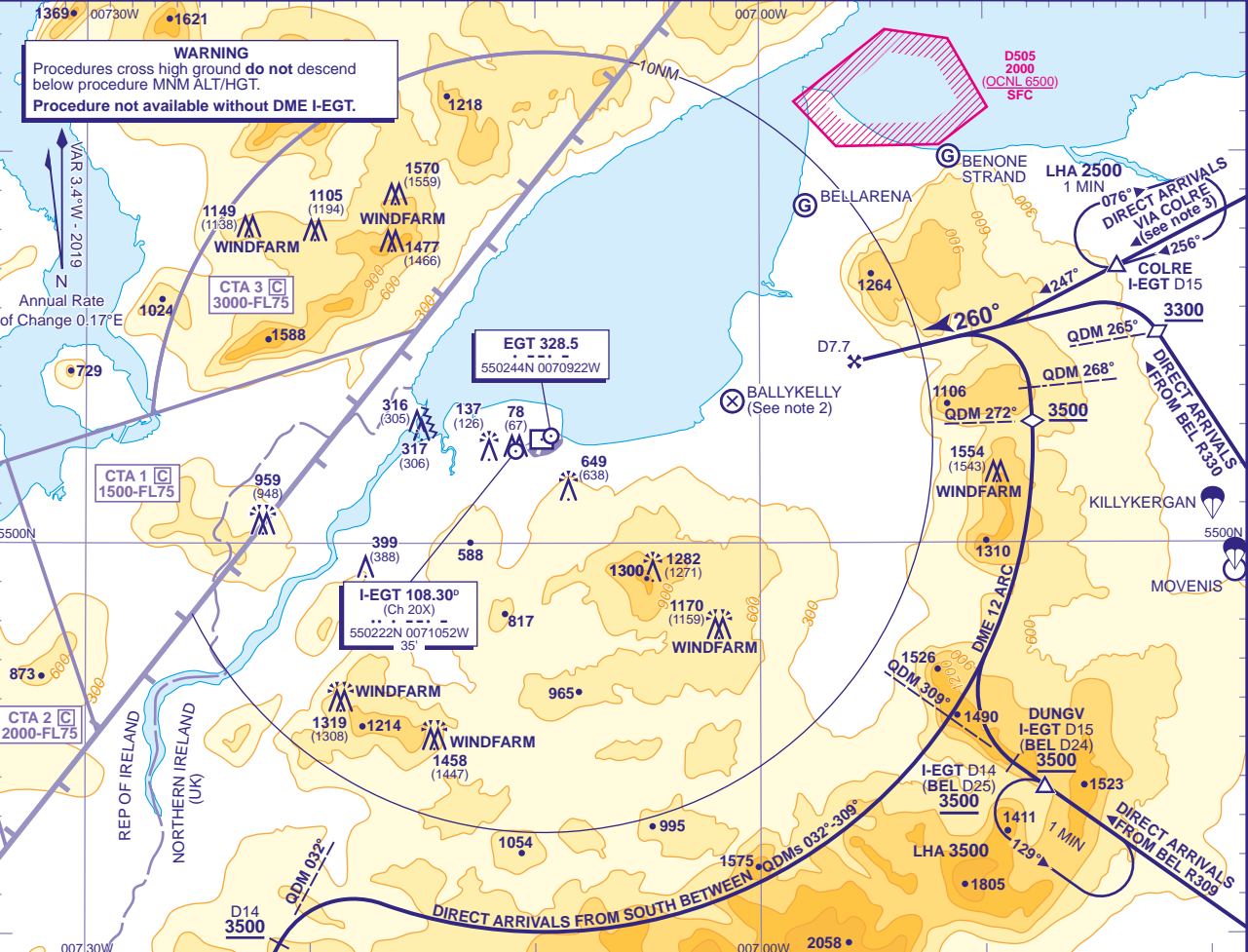


Direct Arrivals
NDB(L)/DME
RWY 26
(ACFT CAT A,B,C,D)



APP	123.625	EGLINTON APPROACH	AD ELEVATION	23
TWR	134.155	EGLINTON TOWER	THR ELEVATION	11
ATIS	119.380	EGLINTON INFORMATION	OBSTACLE ELEVATION	1570 AMSL (1559) (ABOVE THR)
			BEARINGS ARE MAGNETIC	TRANSITION ALTITUDE 3000



DIRECT ARRIVALS VIA COLRE HOLD
Arrival **not below MSA**. From COLRE continue on track 247° to establish on FAT (nominal intercept at I-EGT DME 11.4/MAC DME 45.3). When established, descend to **2500**(2489) by the FAF, then continue as for main procedure.

DIRECT ARRIVALS VIA BEL VOR R330
Arrival **not below MSA**. Intercept and establish on BEL VOR R330. From lead QDM NDB(L) EGT 265° (nominal BEL DME 30.4) turn left to establish on FAT. When established, descend to **2500**(2489) by the FAF, then continue as for main procedure.

DIRECT ARRIVALS VIA COLRE (see note 3)
Arrival **not below MSA** to intercept and follow direct track to COLRE. Continue on track 247° to establish on FAT (nominal intercept at I-EGT DME 11.4/MAC DME 45.3). When established, descend to **2500**(2489) by the FAF, then continue as for main procedure.

DIRECT ARRIVALS FROM SOUTH VIA I-EGT DME 12 ARC
Arrival between NDB(L) EGT QDM 032° to 309° anticlockwise **not below 3500**. After passing I-EGT DME 14 turn right to establish on I-EGT DME 12 arc anticlockwise. At QDM 272° descend to **2500**. At lead QDM 268° commence left turn to establish on FAT. When established continue as for main procedure.

DIRECT ARRIVALS VIA BEL VOR R309/DUNGV HOLD
Arrival **not below 3500**. Intercept and establish on BEL VOR R309. At I-EGT DME 14 (nominal BEL DME 25) turn right to intercept and follow I-EGT DME 12 arc. At QDM 272° descend to **2500**. At lead QDM 268° commence left turn to establish on FAT. When established continue as for main procedure.

- NOTES**
- 1 DME not usable below **3500** between 140° and 185° due to terrain effects.
 - 2 Pilots are reminded of the close proximity of disused airfield Ballykelly, 5NM east of Londonderry. Ballykelly AD has similar RWY directions and pattern to Londonderry. Pilots of aircraft en-route and in the circuit at Londonderry should positively identify Londonderry/Eglinton before committing their aircraft to land.
 - 3 Direct Arrivals via COLRE subject to approval from Eglinton ATC.

CHANGE (4/19): TWR. ATIS FREQUENCIES.