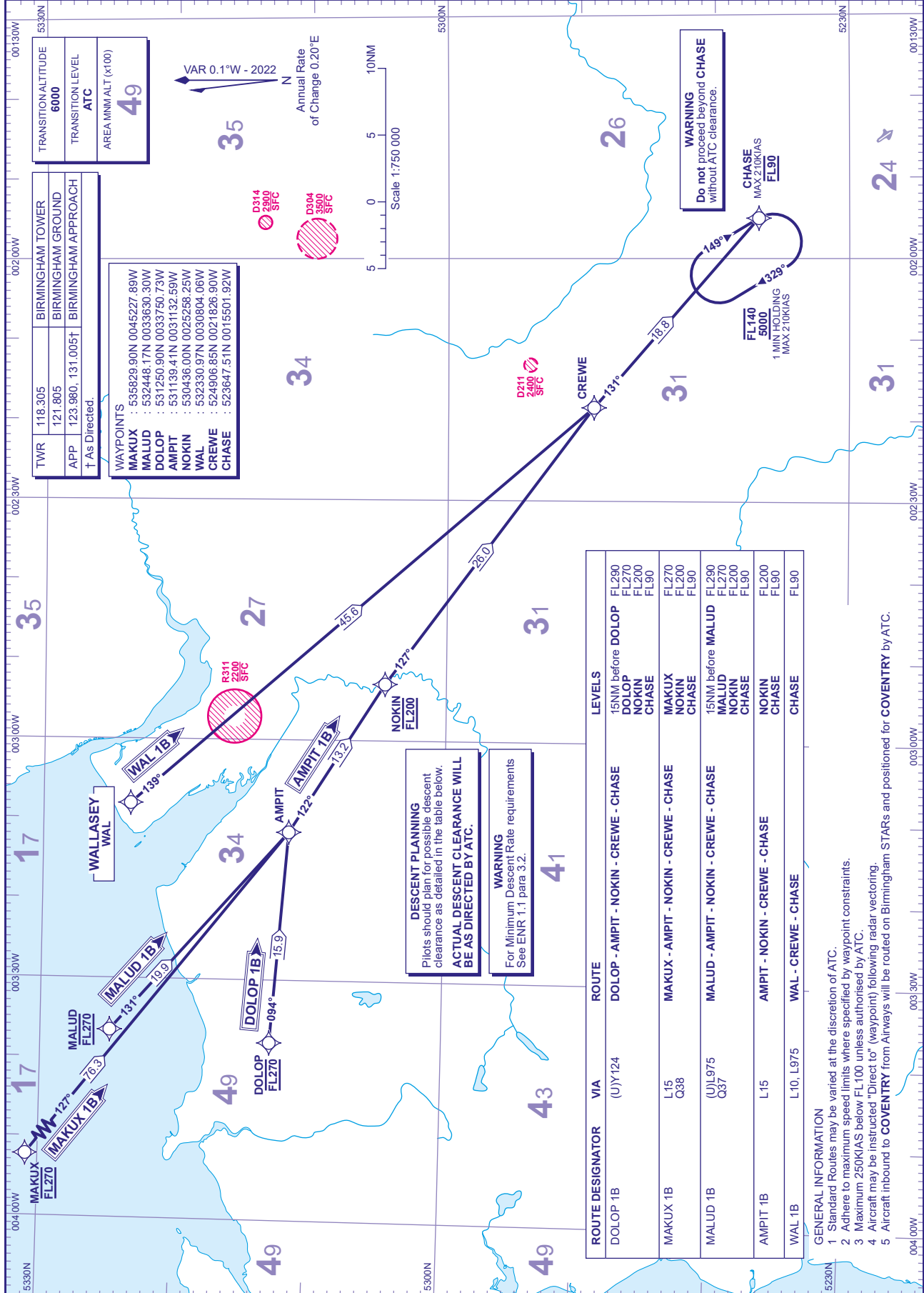


RNAV5 (DME/DME or GNSS) STANDARD ARRIVAL CHART - INSTRUMENT (STAR) - ICAO

DISTANCES IN NAUTICAL MILES
TRACKS ARE MAGNETIC
ALTITUDES AND ELEVATIONS ARE IN FEET

DOLOP 1B MAKUX 1B MALUD 1B AMPIT 1B WAL 1B



TWR	118.305	BIRMINGHAM TOWER
	121.805	BIRMINGHAM GROUND
APP	123.980, 131.005†	BIRMINGHAM APPROACH
†	As Directed.	

WAYPOINTS

MAKUX	: 535829.90N 0045227.89W
MALUD	: 532448.17N 0033630.30W
DOLOP	: 531250.90N 0033750.73W
AMPIT	: 531139.41N 0031132.59W
NOKIN	: 530436.00N 0025258.25W
WAL	: 532330.97N 0030804.06W
CREWE	: 524906.85N 0021826.90W
CHASE	: 523647.51N 0015501.92W

ROUTE DESIGNATOR	VIA	ROUTE	LEVELS
DOLOP 1B	(U)Y124	DOLOP - AMPIT - NOKIN - CREWE - CHASE	15NM before DOLOP FL290 FL270 FL200 FL90
MAKUX 1B	L15 Q38	MAKUX - AMPIT - NOKIN - CREWE - CHASE	MAKUX NOKIN CHASE FL270 FL200 FL90
MALUD 1B	(U)L975 Q37	MALUD - AMPIT - NOKIN - CREWE - CHASE	15NM before MALUD FL290 FL270 FL200 FL90
AMPIT 1B	L15	AMPIT - NOKIN - CREWE - CHASE	NOKIN CHASE FL200 FL90
WAL 1B	L10, L975	WAL - CREWE - CHASE	CHASE FL90

- GENERAL INFORMATION**
- Standard Routes may be varied at the discretion of ATC.
 - Adhere to maximum speed limits where specified by waypoint constraints.
 - Maximum 250KIAS below FL100 unless authorised by ATC.
 - Aircraft may be instructed "Direct to" (waypoint) following radar vectoring.
 - Aircraft inbound to **COVENTRY** from Airways will be routed on Birmingham STARs and positioned for **COVENTRY** by ATC.

CHANGE (1/21): AREA MNM ALT FIGURE REVISED.