

002.00W

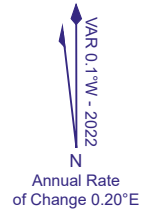
| | | |
|-----|---------|---------------------|
| TWR | 118.305 | BIRMINGHAM TOWER |
| | 121.930 | BIRMINGHAM DELIVERY |
| | 121.805 | BIRMINGHAM GROUND |
| RAD | 123.980 | BIRMINGHAM RADAR |

| | |
|---------------------|-------------|
| TRANSITION ALTITUDE | 6000 |
| AREA MNM ALT (x100) | 31 |

| | |
|--------------|--------------------------|
| WAYPOINTS | |
| BBW01 | : 523123.70N 0014931.20W |
| BBW02 | : 523028.23N 0015430.67W |
| BBW04 | : 522729.54N 0015643.14W |
| UMLUX | : 522237.21N 0020019.14W |

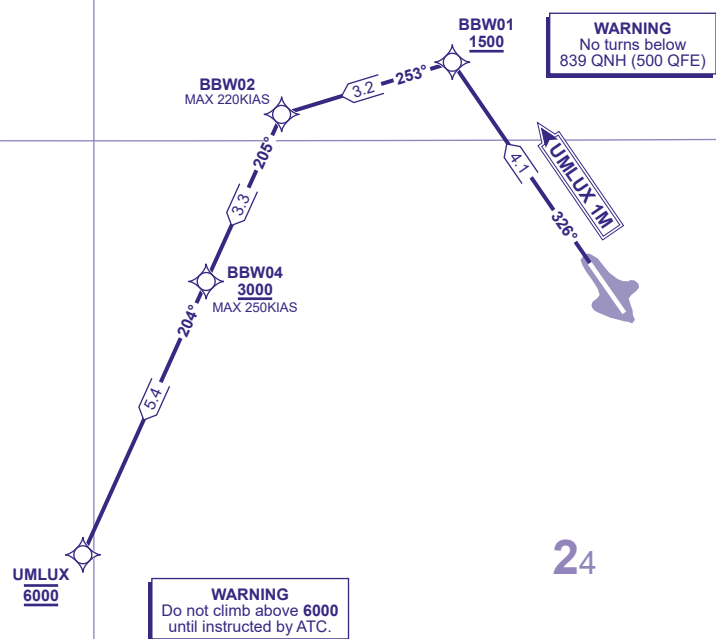
31

26

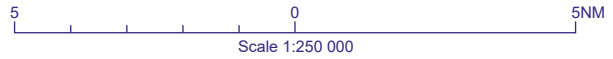


5230N

5230N



24



UMLUX 1M Climb straight ahead to **BBW01**, left to **BBW02**, left to **BBW04** - **UMLUX**.
RWY 33

NOTE 1. Close-in obstacles exist for RWY 33 departures. See Aerodrome Obstacle Chart and EGBB AD 2.10 Aerodrome Obstacles.
NOTE 2. Adhere to maximum speed limits where specified by waypoint constraints.
NOTE 3. Maximum 250KIAS below **FL100** unless authorised by ATC.

ADDITIONAL RNAV DATA

1. DME/DME only procedure: areas of no coverage and limited redundancy are present below **2000** therefore RNAV1 SIDs are available only for approved aircraft that are either GNSS equipped or that have DME/DME and INS/IRU with automatic runway updating capability.

GENERAL INFORMATION

1. RNAV1 SIDs reflect Noise Preferential Routeings. See EGBB AD 2.21 Noise Abatement Procedures
2. After departure, aircraft shall remain on the Tower frequency until instructed.
3. En-route cruising levels will be issued after take-off by 'London Control'.
4. Report callsign, SID designator, current altitude and cleared level on first contact with 'London Control'.

002.00W