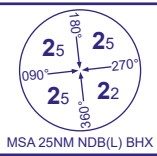


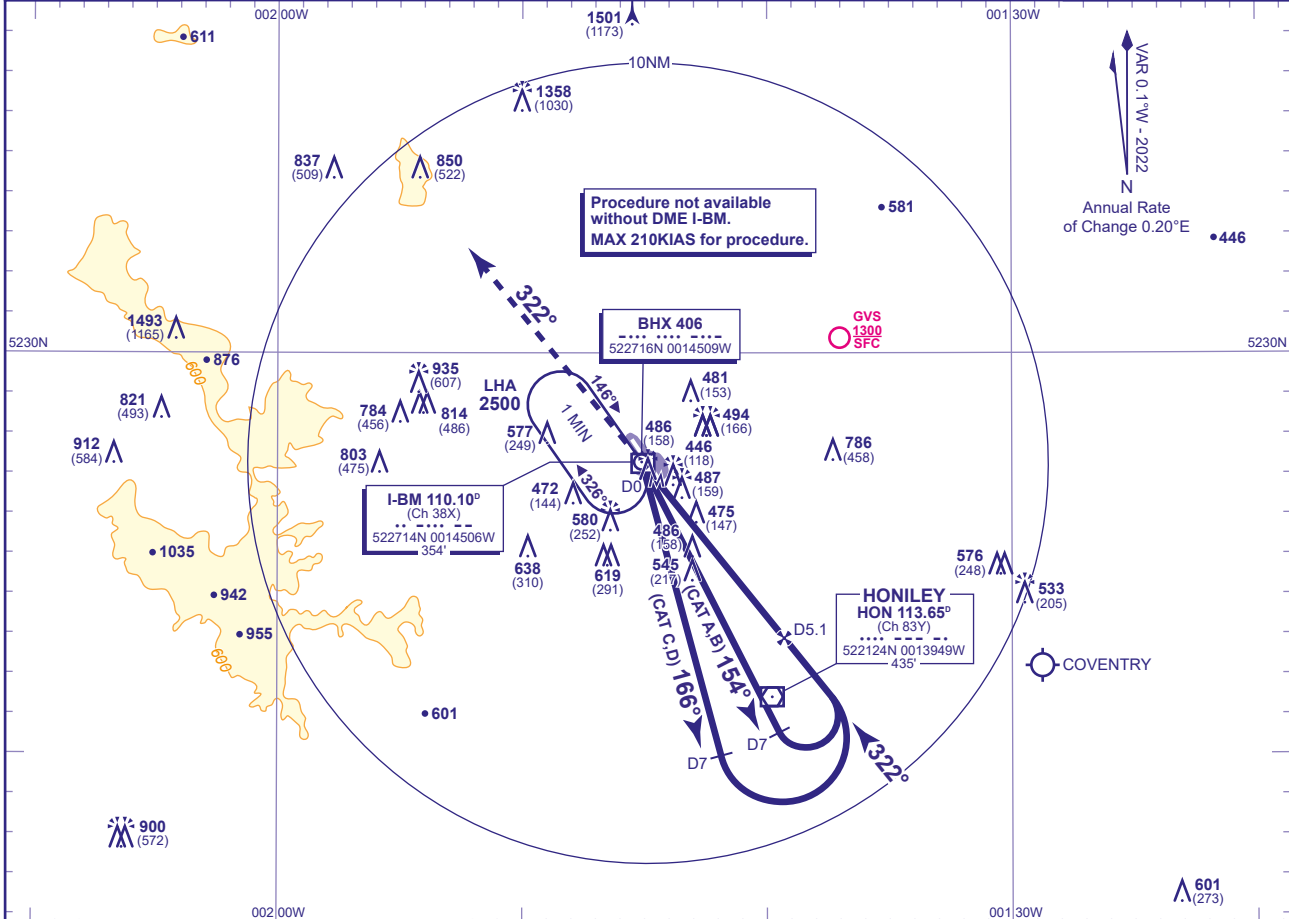
# INSTRUMENT APPROACH - ICAO

**BIRMINGHAM**  
**NDB(L)/DME**  
**RWY 33**  
 (ACFT CAT A,B,C,D)



APP	123.980, 131.005	BIRMINGHAM APPROACH	AD ELEVATION	339
TWR	118.305	BIRMINGHAM TOWER	THR ELEVATION	328
	121.805	BIRMINGHAM GROUND	OBSTACLE ELEVATION	1501 AMSL (1173) (ABOVE THR)
RAD	123.980, 131.330	BIRMINGHAM RADAR		
ATIS	136.030	BIRMINGHAM INFORMATION	BEARINGS ARE MAGNETIC	

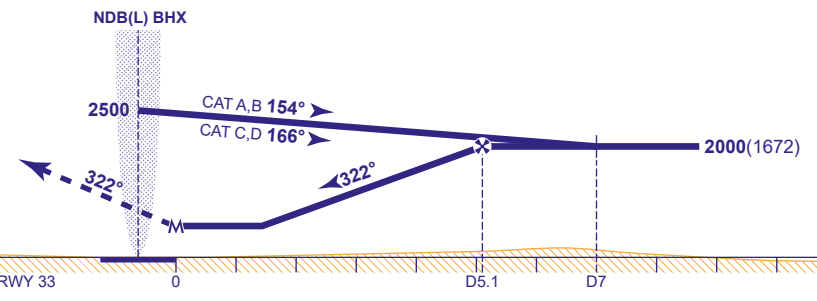
TRANSITION ALTITUDE  
**6000**



**RECOMMENDED PROFILE** Gradient 5.2%, 320FT/NM

DME I-BM	5	4	3	2
ALT(HGT)	1970(1642)	1660(1332)	1340(1012)	1020(692)

**MAPt I-BM DME ZERO (THR RWY 33)**  
 Climb straight ahead to **3000**, then as directed by ATC.



Aircraft Category		A	B	C	D	Rate of descent	G/S KT				
OCA (OCH)	Procedure	800(472)	800(472)	800(472)	800(472)		FT/MIN	160	140	120	100
VM(C)OCA (OCH AAL)	Total Area	810(471)	920(581)	1080(741)	1310(971)		850	740	640	530	420

**NOTE** FAT offset 3° from RWY C/L and intercepts RWY C/L 1.4NM before THR.