

# INSTRUMENT DEPARTURE CHART - ICAO

**BIRMINGHAM**

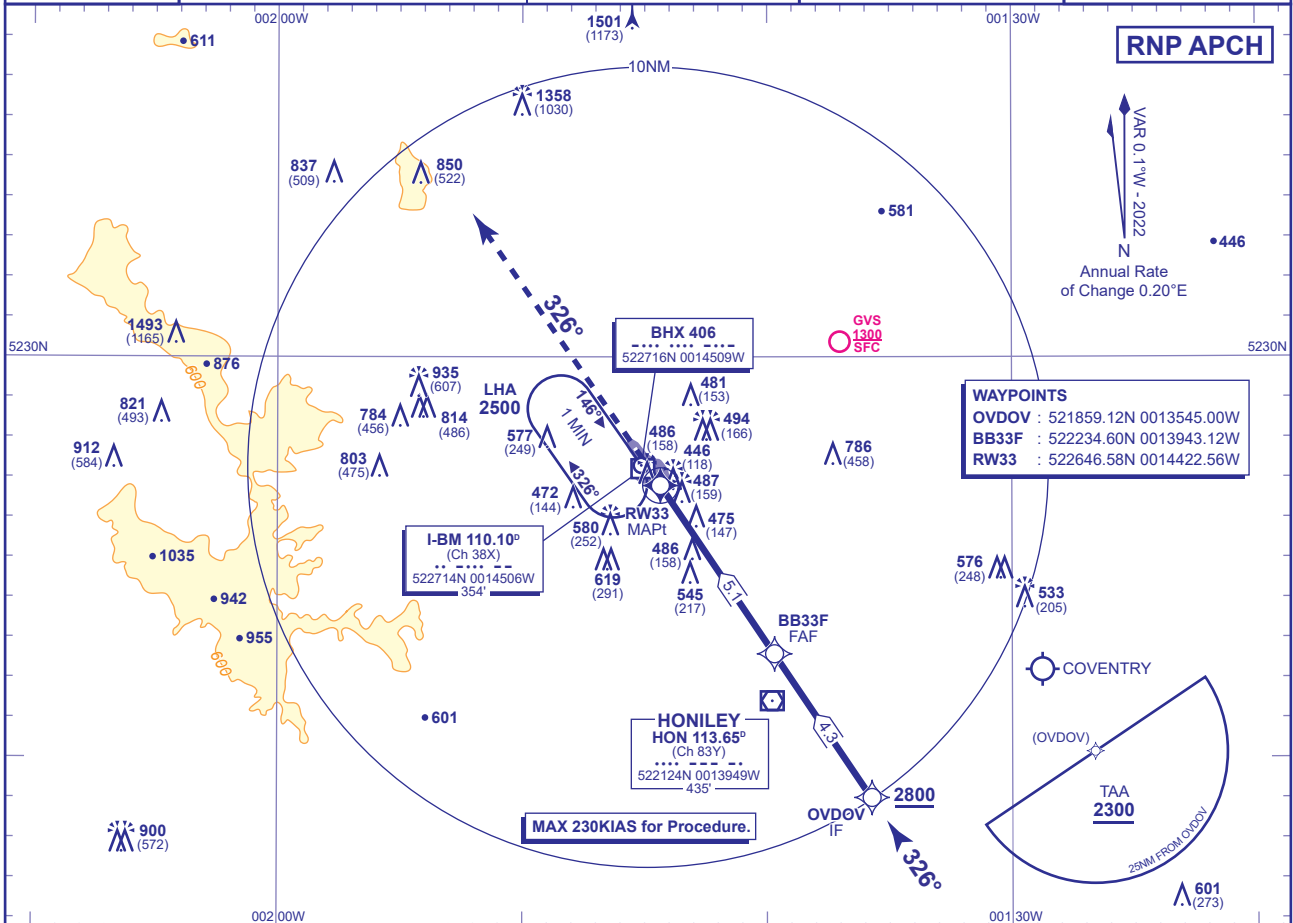


APP	123.980, 131.005	BIRMINGHAM APPROACH	AD ELEVATION	339
TWR	118.305	BIRMINGHAM TOWER	THR ELEVATION	328
	121.805	BIRMINGHAM GROUND	OBSTACLE ELEVATION	1501 AMSL (1173) (ABOVE THR)
RAD	123.980, 131.330	BIRMINGHAM RADAR		
ATIS	136.030	BIRMINGHAM INFORMATION	BEARINGS ARE MAGNETIC	

**RNP RWY 33**  
(ACFT CAT A,B,C,D)

MIN TEMP -10°C

TRANSITION ALTITUDE  
**6000**



**WAYPOINTS**  
**OVD0V** : 521859.12N 0013545.00W  
**BB33F** : 522234.60N 0013943.12W  
**RW33** : 522646.58N 0014422.56W

**I-BM 110.10°**  
(Ch 38X)  
522714N 0014506W  
354'

**HONILEY HON 113.65°**  
(Ch 83Y)  
522124N 0013949W  
435'

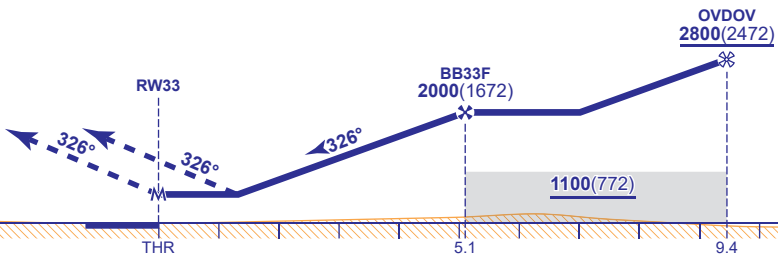
**MAX 230KIAS for Procedure.**

**RECOMMENDED PROFILE VERTICAL PATH ANGLE 3.0° ( LNAV 5.2%) 320FT/NM**

<b>NM to RW33</b>	5	4	3	2
<b>ALT(HGT)</b>	1980(1652)	1660(1332)	1340(1012)	1020(692)

**TCH 54**

**MAPt (LNAV): RW33**  
 Climb straight ahead to **3000** then as directed by ATC.  
 RCF: Climb ahead to **2500** or **I-BM DME 2** (HON D9.2), whichever is the later. Then procedure turn right to **NDB(L) BHx**.



Aircraft Category	A	B	C	D	Rate of descent	G/S KT	160	140	120	100	80
						FT/MIN	850	740	640	530	420
OCA (OCH)	LNAV/VNAV	740(412)	740(412)	740(412)	740(412)						
	LNAV	750(422)	750(422)	750(422)	750(422)						
VM(C)OCA (OCH AAL)	Total Area	810(471)	920(581)	1080(741)	1310(971)						

**CHANGE (13/20): CAT D VM(C) OCA (OCH AAL). PAGE RENUMBERED.**