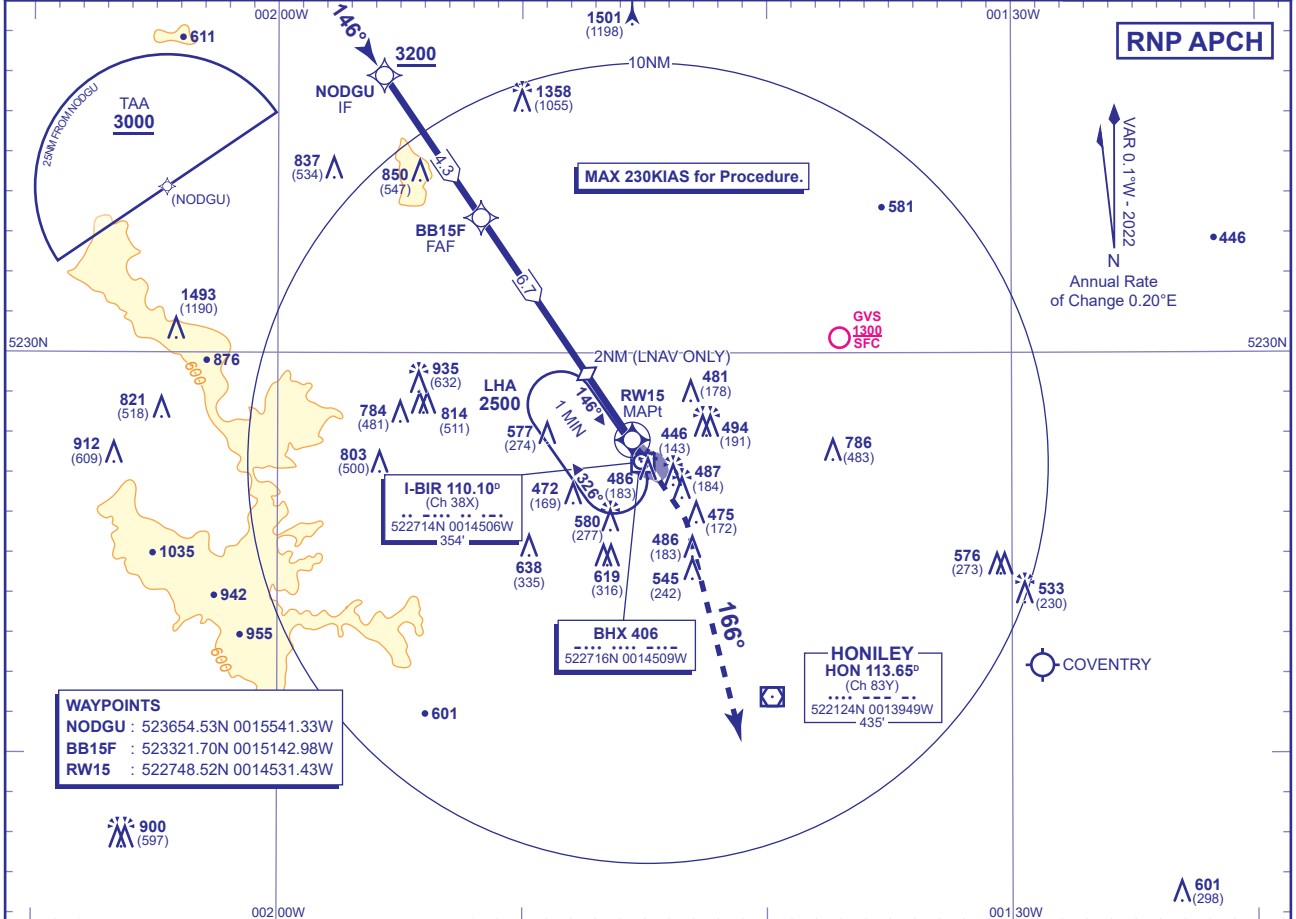




|      |                  |                        |                       |                                 |
|------|------------------|------------------------|-----------------------|---------------------------------|
| APP  | 123.980, 131.005 | BIRMINGHAM APPROACH    | AD ELEVATION          | 339                             |
| TWR  | 118.305          | BIRMINGHAM TOWER       | THR ELEVATION         | 303                             |
|      | 121.805          | BIRMINGHAM GROUND      | OBSTACLE ELEVATION    | 1501 AMSL<br>(1198) (ABOVE THR) |
| RAD  | 123.980, 131.330 | BIRMINGHAM RADAR       |                       |                                 |
| ATIS | 136.030          | BIRMINGHAM INFORMATION | BEARINGS ARE MAGNETIC |                                 |

|                     |       |
|---------------------|-------|
| MIN TEMP            | -10°C |
| TRANSITION ALTITUDE | 6000  |

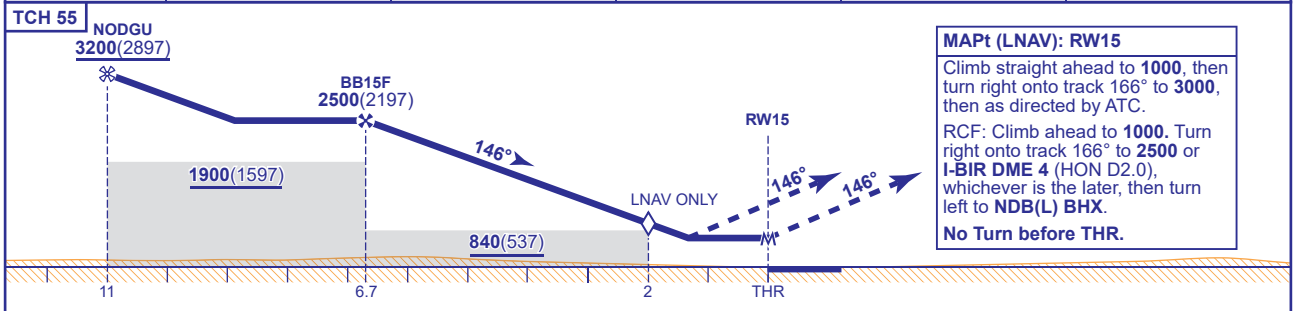


**WAYPOINTS**

NODGU : 523654.53N 0015541.33W  
 BB15F : 523321.70N 0015142.98W  
 RW15 : 522748.52N 0014531.43W

RECOMMENDED PROFILE VERTICAL PATH ANGLE 3.0° (LNAV 5.2%), 320FT/NM

|            |            |            |            |            |              |
|------------|------------|------------|------------|------------|--------------|
| NM to RW15 | 6          | 5          | 4          | 3          | 2 (LNAV SDF) |
| ALT(HGT)   | 2270(1967) | 1960(1657) | 1640(1337) | 1320(1017) | 1000(697)    |



**MAPt (LNAV): RW15**

Climb straight ahead to **1000**, then turn right onto track **166°** to **3000**, then as directed by ATC.

RCF: Climb ahead to **1000**. Turn right onto track **166°** to **2500** or **I-BIR DME 4** (HON D2.0), whichever is the later, then turn left to **NDB(L) BHX**.

**No Turn before THR.**

| Aircraft Category  | A          | B        | C        | D         | Rate of descent | G/S KT   | 160    | 140 | 120 | 100 | 80  |
|--------------------|------------|----------|----------|-----------|-----------------|----------|--------|-----|-----|-----|-----|
| OCA (OCH)          | LNAV/VNAV  | 740(437) | 740(437) | 740(437)  |                 | 740(437) | FT/MIN | 850 | 740 | 640 | 530 |
| VM(C)OCA (OCH AAL) | Total Area | 810(471) | 920(581) | 1080(741) | 1310(971)       |          |        |     |     |     |     |