

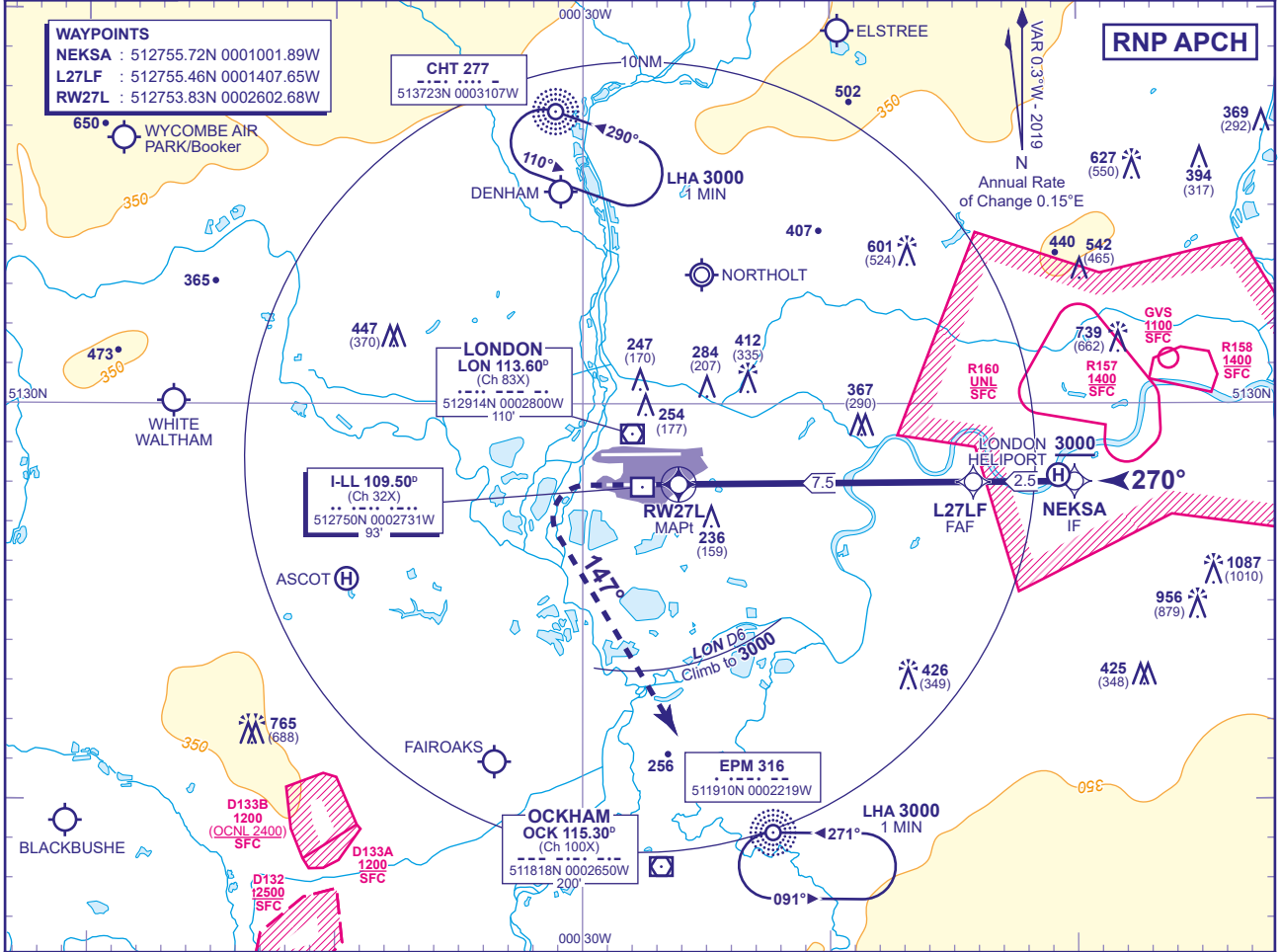


APP 119.730, 120.400, 127.525, 134.980	HEATHROW DIRECTOR	AD ELEVATION 83
TWR 118.505, 118.705, 124.475	HEATHROW TOWER	THR ELEVATION 77
RAD 125.625, 127.525	HEATHROW RADAR	OBSTACLE ELEVATION 1087 AMSL (1010) (ABOVE THR)
ATIS 128.080, 113.750, 115.100	HEATHROW INFORMATION	BEARINGS ARE MAGNETIC

MIN TEMP -10°C
TRANSITION ALTITUDE 6000

RNP Z
RWY 27L
(ACFT CAT A,B,C,D)

WAYPOINTS
NEKSA : 512755.72N 0001001.89W
L27LF : 512755.46N 0001407.65W
RW27L : 512753.83N 0002602.68W



RECOMMENDED PROFILE VERTICAL PATH ANGLE 3.0° (LNAV 5.24%), 318FT/NM

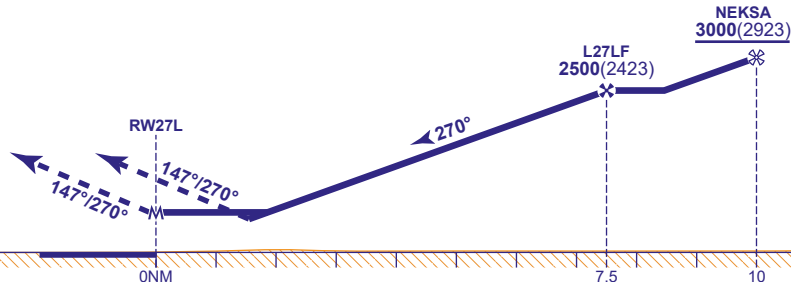
NM to RW27L	7	6	5	4	3	2
ALT(HGT)	2360(2283)	2040(1963)	1720(1643)	1410(1333)	1090(1013)	770(693)

TCH 50

MAPt (LNAV): RW27L

Climb to 2000 - straight ahead until passing 1080 or I-LL DME zero inbound whichever is later, then turn left onto track 147°. After passing 1080 revert to conventional navigation. When established and passing LON DME 6 climb to 3000 without delay. Continue as directed.

RCF: On reaching 3000 proceed to NDB EPM at 3000.



Aircraft Category		A	B	C	D	Rate of descent	G/S KT	160	140	120	100	80
		LNAV/VNAV	LNAV	LNAV	LNAV		FT/MIN	850	740	640	530	420
OCA (OCH)	LNAV/VNAV	510(433)	510(433)	510(433)	510(433)							
	LNAV	640(563)	640(563)	640(563)	640(563)							
VM(C)OCA (OCH AAL)	Total Area	750(667)	750(667)	850(767)	850(767)							

- NOTES**
- Pilots should 'Request RNP Z Approach' on first contact with Heathrow Director.
 - Aircraft will normally be radar vectored from the STAR Holding/Initial Approach Fixes.
 - Pilots should not expect descent clearance below 4000 until 13NM from touchdown.
 - Missed Approach Procedure and RCF use conventional navigation aids and are not available without DME I-LL, DME LON and NDB EPM.

CHANGE (11/20): RNP REFERENCES ADDED. NEKSA AND L27LF HEIGHT REFERENCES.