

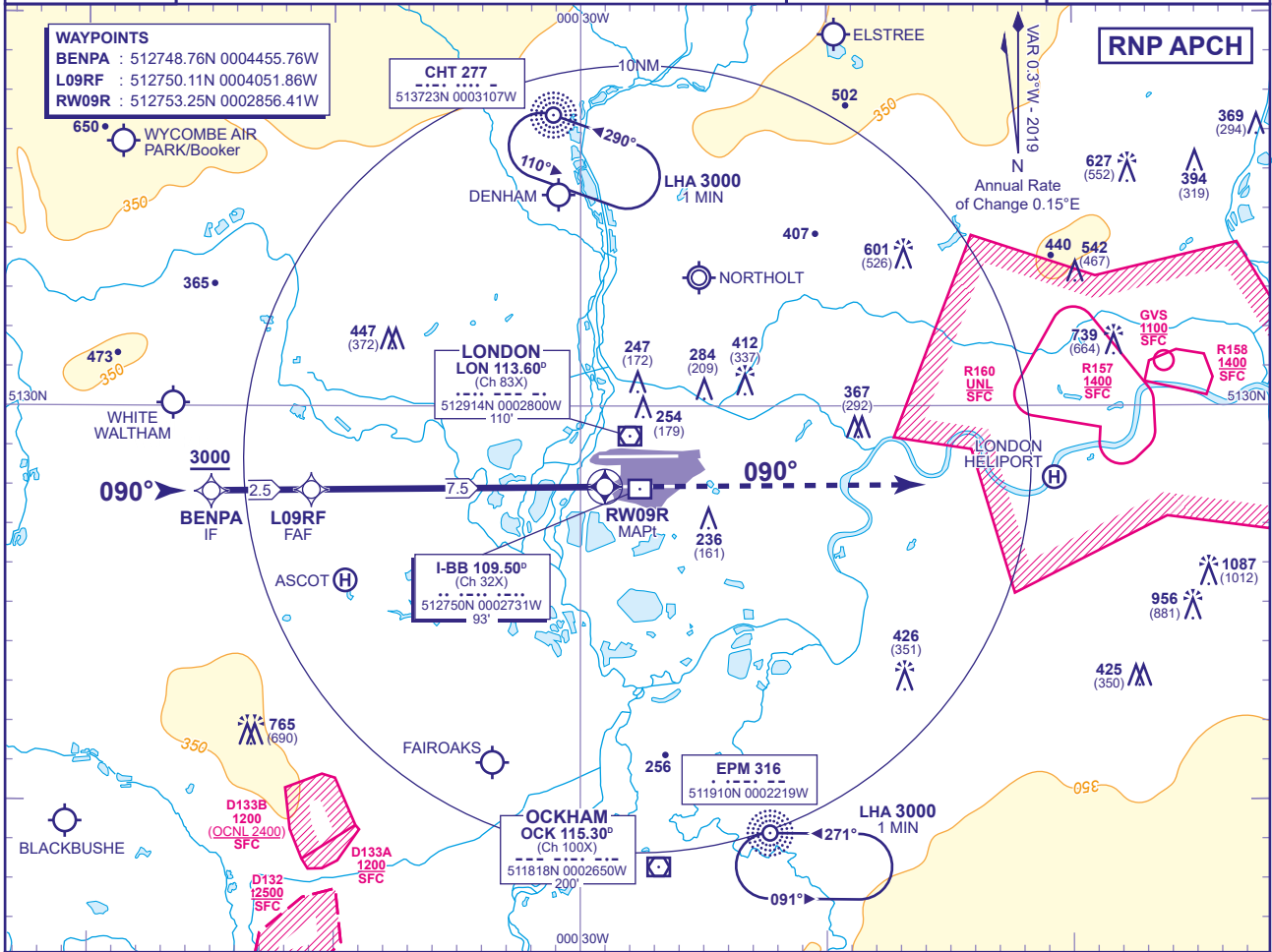
23  
MSA 25NM ARP

APP 119.730, 120.400, 127.525, 134.980	HEATHROW DIRECTOR
TWR 118.505, 118.705, 124.475	HEATHROW TOWER
RAD 125.625, 127.525	HEATHROW RADAR
ATIS 128.080, 113.750, 115.100	HEATHROW INFORMATION

AD ELEVATION 83
THR ELEVATION 75
OBSTACLE ELEVATION 1087 AMSL (1012) (ABOVE THR)
BEARINGS ARE MAGNETIC

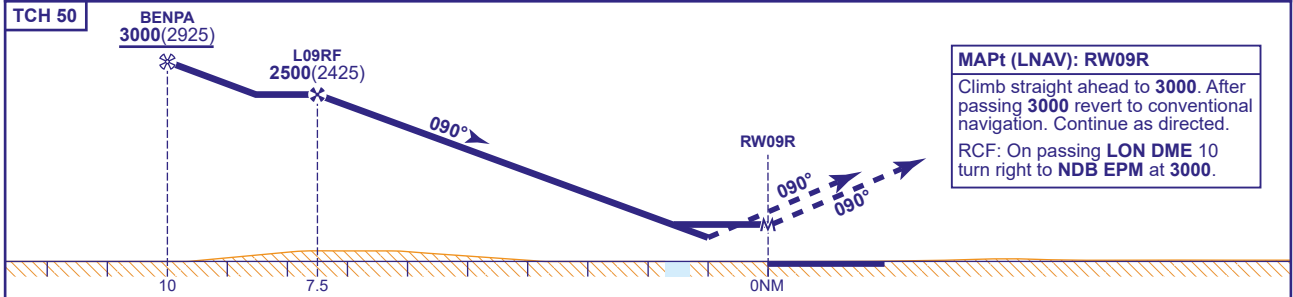
MIN TEMP -10°C
TRANSITION ALTITUDE 6000

**WAYPOINTS**  
**BENPA** : 512748.76N 0004455.76W  
**L09RF** : 512750.11N 0004051.86W  
**RW09R** : 512753.25N 0002856.41W



RECOMMENDED PROFILE VERTICAL PATH ANGLE 3.0° (LNAV 5.24%), 318FT/NM

NM to RW09R	7	6	5	4	3	2
ALT(HGT)	2360(2285)	2040(1965)	1720(1645)	1400(1325)	1090(1015)	770(695)



**MAPt (LNAV): RW09R**  
 Climb straight ahead to 3000. After passing 3000 revert to conventional navigation. Continue as directed.  
 RCF: On passing LON DME 10 turn right to NDB EPM at 3000.

Aircraft Category		A	B	C	D	Rate of descent	G/S KT	160	140	120	100	80
		500(425)	500(425)	500(425)	500(425)		FT/MIN	850	740	640	530	420
OCA (OCH)	LNAV/VNAV	500(425)	500(425)	500(425)	500(425)							
	LNAV	630(555)	630(555)	630(555)	630(555)							
VM(C)OCA (OCH AAL)	Total Area	750(667)	750(667)	850(767)	850(767)							

**NOTES**  
 1 Pilots should 'Request RNP Z Approach' on first contact with Heathrow Director.  
 2 Aircraft will normally be radar vectored from the STAR Holding/Initial Approach Fixes.  
 3 Missed Approach Procedure and RCF use conventional navigation aids and are not available without DME LON and NDB EPM.