

23
MSA 25NM ARP

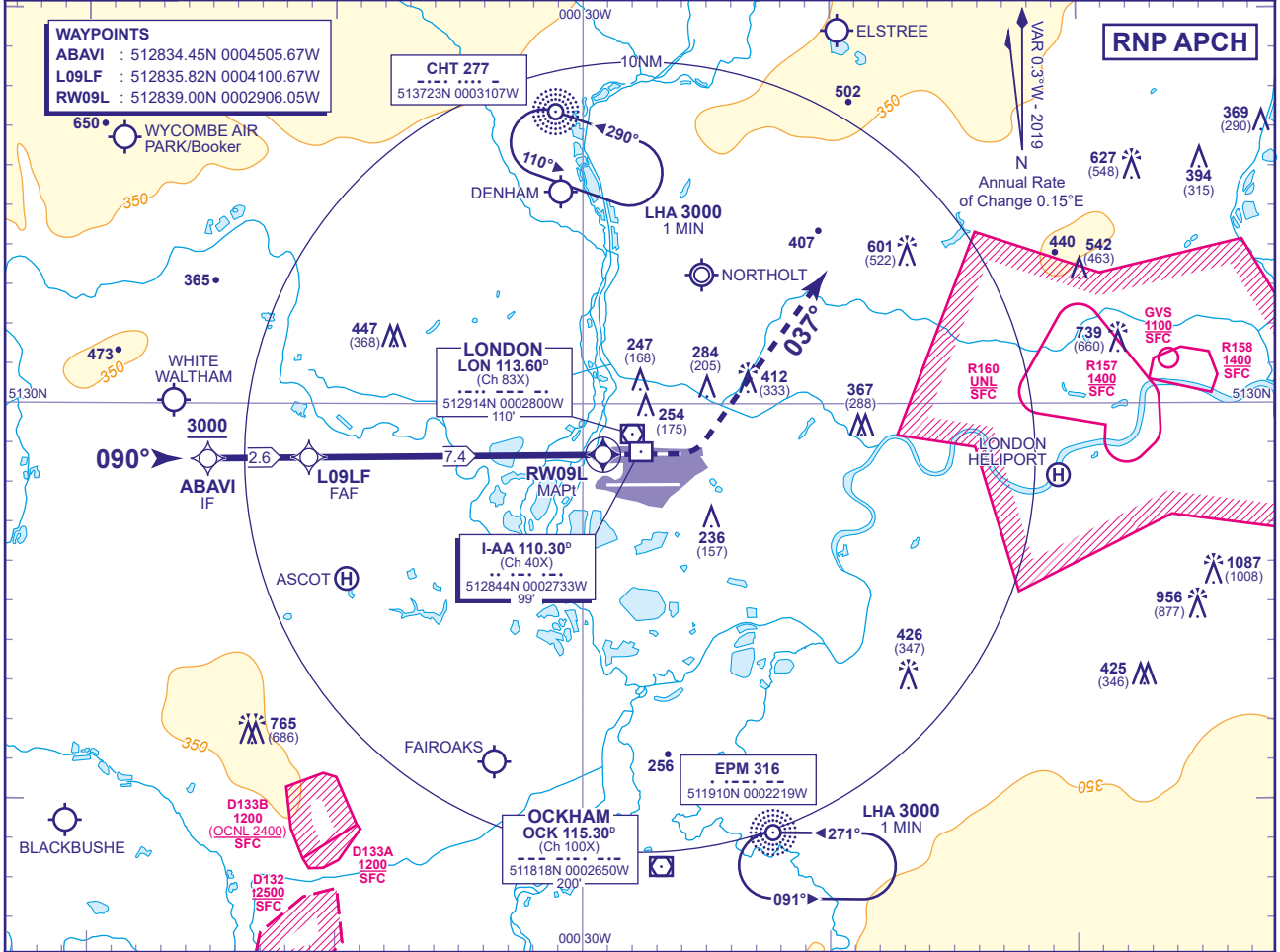
APP 119.730, 120.400, 127.525, 134.980	HEATHROW DIRECTOR
TWR 118.505, 118.705, 124.475	HEATHROW TOWER
RAD 125.625, 127.525	HEATHROW RADAR
ATIS 128.080, 113.750, 115.100	HEATHROW INFORMATION

AD ELEVATION 83
THR ELEVATION 79
OBSTACLE ELEVATION 1087 AMSL (1008) (ABOVE THR)
BEARINGS ARE MAGNETIC

MIN TEMP -10°C
TRANSITION ALTITUDE 6000

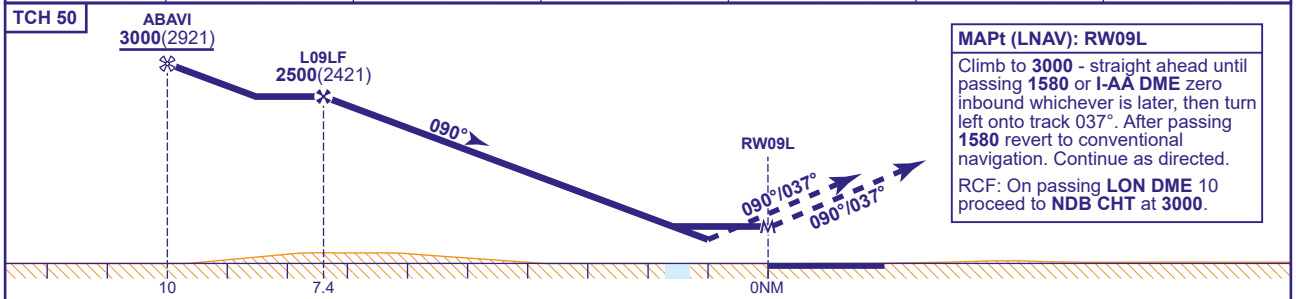
WAYPOINTS

ABAVI : 512834.45N 0004505.67W
L09LF : 512835.82N 0004100.67W
RW09L : 512839.00N 0002906.05W



RECOMMENDED PROFILE VERTICAL PATH ANGLE 3.0° (LNAV 5.24%), 318FT/NM

NM to RW09L	7	6	5	4	3	2
ALT(HGT)	2360(2281)	2040(1961)	1730(1651)	1410(1331)	1090(1011)	770(691)



MAPt (LNAV): RW09L
 Climb to 3000 - straight ahead until passing 1580 or I-AA DME zero inbound whichever is later, then turn left onto track 037°. After passing 1580 revert to conventional navigation. Continue as directed.
 RCF: On passing LON DME 10 proceed to NDB CHT at 3000.

Aircraft Category		A	B	C	D	Rate of descent	G/S KT	160	140	120	100	80
		FT/MIN	850	740	640		530	420				
OCA (OCH)	LNAV/VNAV	570(491)	570(491)	570(491)	570(491)							
	LNAV	630(551)	630(551)	630(551)	630(551)							
VM(C)OCA (OCH AAL)	Total Area	750(667)	750(667)	850(767)	850(767)							

- NOTES**
- Pilots should 'Request RNP Z Approach' on first contact with Heathrow Director.
 - Aircraft will normally be radar vectored from the STAR Holding/Initial Approach Fixes.
 - Missed Approach Procedure and RCF use conventional navigation aids and are not available without DME I-AA, DME LON and NDB CHT.