

INSTRUMENT APPROACH CHART - ICAO

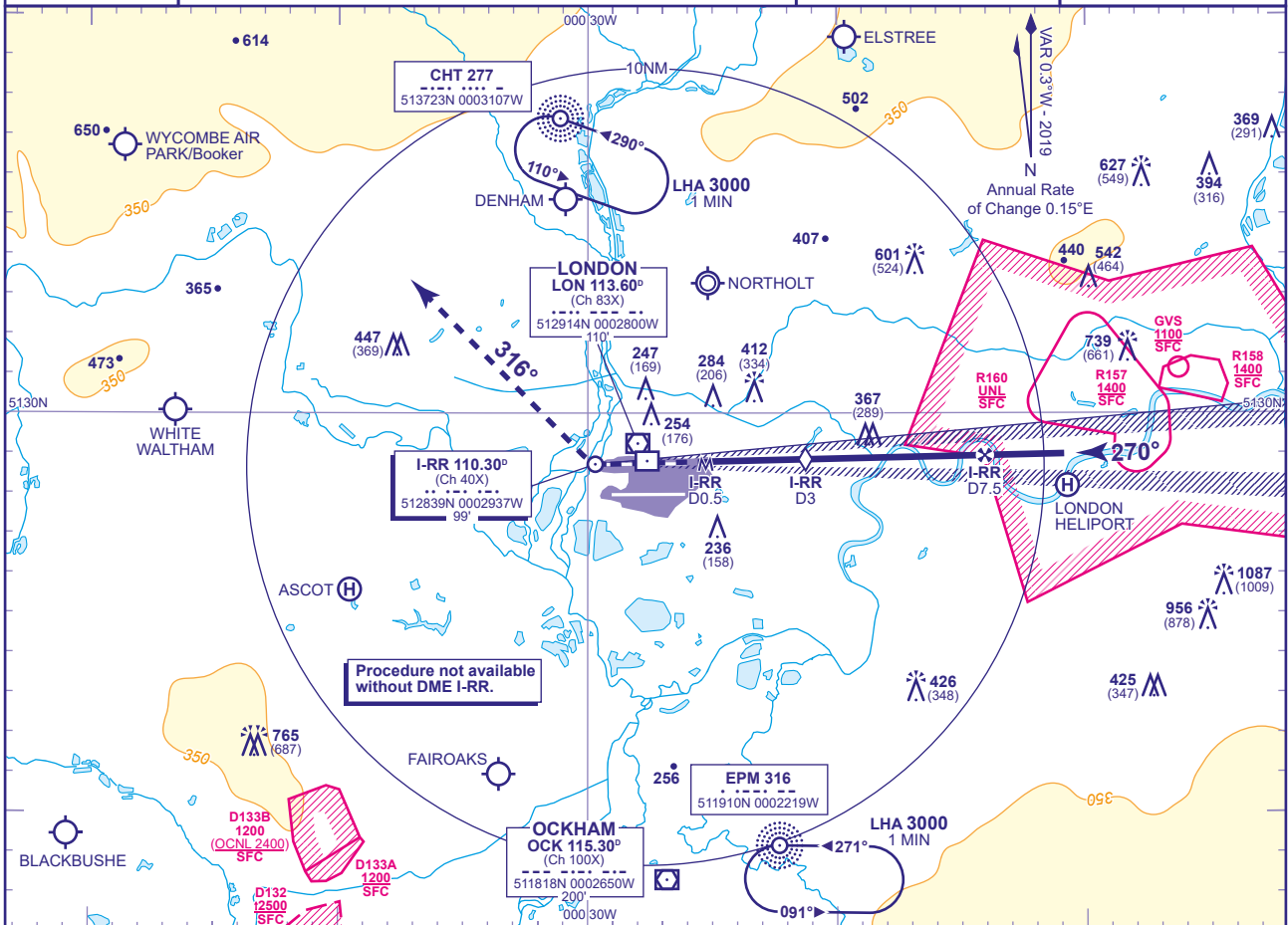
LONDON/HEATHROW LOC/DME I-RR RWY 27R (ACFT CAT A,B,C,D)



MSA 25NM LON VOR

APP 119.730, 120.400, 127.525, 134.980	HEATHROW DIRECTOR	AD ELEVATION	83
TWR 118.505, 118.705, 124.475	HEATHROW TOWER	THR ELEVATION	78
RAD 125.625, 127.525	HEATHROW RADAR	OBSTACLE ELEVATION	1087 AMSL (1009) (ABOVE THR)
ATIS 128.080, 113.750, 115.100	HEATHROW INFORMATION	BEARINGS ARE MAGNETIC	

TRANSITION ALTITUDE
6000



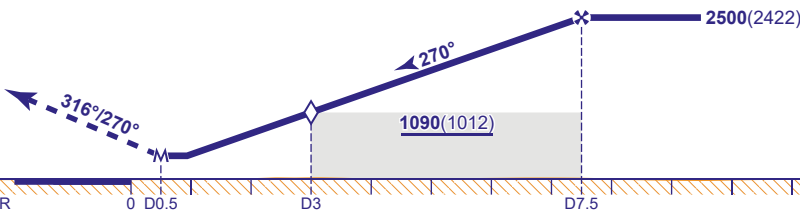
RECOMMENDED PROFILE Gradient 5.2%, 318FT/NM

DME I-RR	7	6	5	4	3 (SDF)	2	1
ALT(HGT)	2370(2292)	2050(1972)	1730(1652)	1410(1332)	1090(1012)	770(692)	450(372)

MAPt I-RR DME 0.5

Climb to **3000** - straight ahead until passing **1580** or **I-RR DME zero** inbound whichever is later, turn right onto track **316°**. Continue as directed.

RADIO FAILURE: On passing **LON DME 10** turn right to **NDB CHT** at **3000**.



I-RR DME zero ranged to THR RWY 27R

Aircraft Category		A	B	C	D	Rate of descent	G/S KT	160	140	120	100	80
							FT/MIN	850	740	640	530	420
OCA (OCH)	Procedure	640(562)	640(562)	640(562)	640(562)							
VM(C)OCA (OCH AAL)	Total Area	750(667)	750(667)	850(767)	850(767)							

- NOTES**
- Aircraft will normally be radar vectored from the STAR Holding/Initial Approach Fixes.
 - All pilots must follow and adhere to recommended profiles.