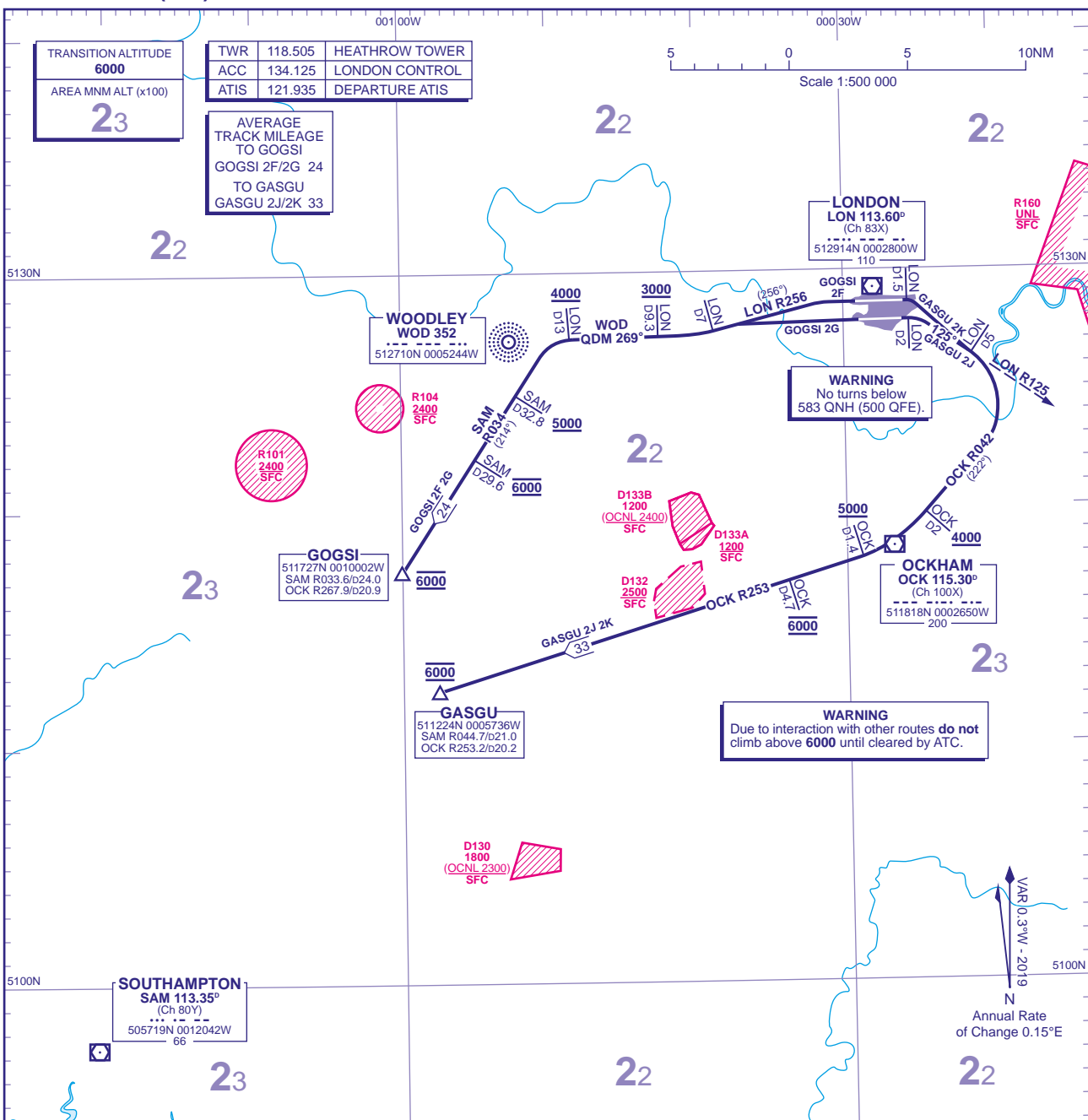


STANDARD DEPARTURE CHART - INSTRUMENT (SID) - ICAO

DISTANCES IN NAUTICAL MILES
BEARINGS, TRACKS AND RADIALS ARE MAGNETIC
ALTITUDES AND ELEVATIONS ARE IN FEET

LONDON HEATHROW GOGSI 2F 2G GASGU 2J 2K



GOGSI 2F RWY 27R	Straight ahead to intercept LON VOR R256 until LON D7, then turn right onto WOD NDB QDM 269°. Cross LON D9.3 at 3000 or above. Cross LON D13 at 4000 or above and turn left at LON D13 to intercept SAM VOR R034, cross SAM D32.8 at 5000 or above, SAM D29.6 at 6000. Maintain 6000 to GOGSI.	N621.
GOGSI 2G RWY 27L	Straight ahead to intercept LON VOR R256 until LON D7, then turn right onto WOD NDB QDM 269°. Cross LON D9.3 at 3000 or above. Cross LON D13 at 4000 or above and turn left at LON D13 to intercept SAM VOR R034, cross SAM D32.8 at 5000 or above, SAM D29.6 at 6000. Maintain 6000 to GOGSI.	
GASGU 2J RWY 09R	Straight ahead to LON D2, then turn right onto LON VOR R125 until LON D5, then turn right onto OCK VOR R042, cross OCK D2 at 4000 or above and turn right onto OCK VOR R253, cross OCK D1.4 at 5000 or above, OCK D4.7 at 6000. Maintain 6000 to GASGU.	N866.
GASGU 2K RWY 09L	Straight ahead to LON D1.5, then turn right onto LON VOR R125 until LON D5, then turn right onto OCK VOR R042, cross OCK D2 at 4000 or above and turn right onto OCK VOR R253, cross OCK D1.4 at 5000 or above, OCK D4.7 at 6000. Maintain 6000 to GASGU.	

- GENERAL INFORMATION**
- 1 RWY 09L/09R Obstacle Clearance Requirements: Minimum Climb Gradient 3.8% to 500 AAL.
 - 2 Close in obstacles exist for departures from all runways. See Aerodrome Obstacle Chart and EGLL 2.10 Aerodrome Obstacles.
 - 3 SIDs reflect Noise Preferential Routings. See EGLL AD 2.21 for Noise Abatement Procedures.
 - 4 Cross Noise Monitoring Points not below 1083 QNH (1000 QFE) thereafter maintain minimum 4% climb gradient to 4000 (Note climb gradients greater than 4% may be required for ATC and airspace purposes) to comply with Noise Abatement requirements.
 - 5 Callsign for RTF frequency used when instructed after take-off 'London Control'. Report callsign, SID designator, current altitude and cleared altitude on first contact with 'London Control'.
 - 6 En-route cruising level will be issued after take-off by 'London Control'. Do not climb above SID levels until instructed by ATC.
 - 7 Maximum 250KIAS below FL100 unless otherwise authorised.
 - 8 Aircraft operators who are unable to conform to the published climb gradients and/SID altitudes are required to inform ATC prior to departure.
 - 9 Expect first CPDLC Data Link Authority to be EGTG.

CHANGE (3/20): GOGSI 1F/1G GASGU 1J/1K AMENDED TO GOGSI 2F/2G GASGU 2J/2K.