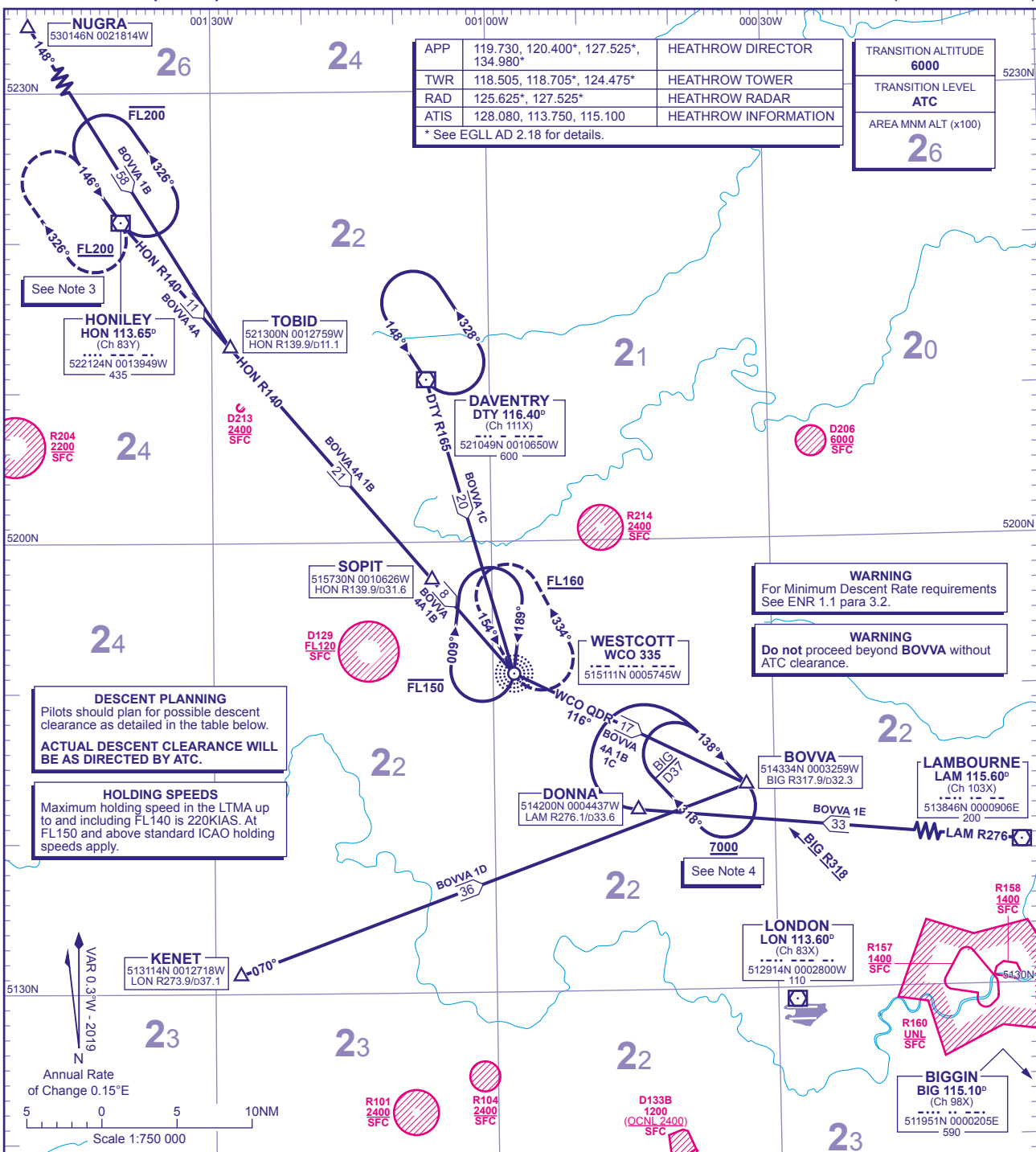


# STANDARD ARRIVAL CHART - INSTRUMENT (STAR) - ICAO

DISTANCES IN NAUTICAL MILES  
BEARINGS, TRACKS AND RADIALS ARE MAGNETIC  
ALTITUDES AND ELEVATIONS ARE IN FEET

# LONDON HEATHROW via BOVVA (VOR BNN u/s)



APP	119.730, 120.400*, 127.525*, 134.980*	HEATHROW DIRECTOR
TWR	118.505, 118.705*, 124.475*	HEATHROW TOWER
RAD	125.625*, 127.525*	HEATHROW RADAR
ATIS	128.080, 113.750, 115.100	HEATHROW INFORMATION

\* See EGLL AD 2.18 for details.

TRANSITION ALTITUDE	6000
TRANSITION LEVEL	ATC
AREA MNM ALT (x100)	26

**HONILEY**  
HON 113.65°  
(Ch 83Y)  
522124N 0013949W  
435

**TOBID**  
521300N 0012759W  
HON R139.9/d11.1

**DAVENTRY**  
DTY 116.40°  
(Ch 111X)  
521049N 0010650W  
600

**SOPIT**  
515730N 0010626W  
HON R139.9/b31.6

**WESTCOTT**  
WCO 335  
515111N 0005745W

**WARNING**  
For Minimum Descent Rate requirements  
See ENR 1.1 para 3.2.

**WARNING**  
Do not proceed beyond BOVVA without  
ATC clearance.

**DESCENT PLANNING**  
Pilots should plan for possible descent clearance as detailed in the table below.  
**ACTUAL DESCENT CLEARANCE WILL BE AS DIRECTED BY ATC.**

**HOLDING SPEEDS**  
Maximum holding speed in the LTMA up to and including FL140 is 220KIAS. At FL150 and above standard ICAO holding speeds apply.

See Note 4

**KENET**  
513114N 0012718W  
LON R273.9/b37.1

**LONDON**  
LON 113.60°  
(Ch 83X)  
512914N 0002800W  
110

**LAMBOURNE**  
LAM 115.60°  
(Ch 103X)  
513846N 0000906E  
200

**DONNA**  
514200N 0004437W  
LAM R276.1/b33.6

**BOVVA**  
514334N 0003259W  
BIG R317.9/c32.3

**BIGGIN**  
BIG 115.10°  
(Ch 98X)  
511951N 0000205E  
590

- BOVVA 4A** Arrival via L15 (FL150 to FL190), L10 (FL140 and below), L612 (FL90 to FL140) to HON VOR continue on HON VOR R140 to TOBID then SOPIT to WCO NDB then turn left onto WCO QDR 116° to BOVVA. FL150 by SOPIT (Heathrow only) FL150 by 5NM before SOPIT (Northolt only)
- BOVVA 1B** Arrival via (U)Y53 (FL200+) continue to NUGRA. From NUGRA continue on 148° to TOBID then turn left onto HON VOR R140 to SOPIT to WCO NDB then turn left onto WCO QDR 116° to BOVVA. FL200 by TOBID FL150 by SOPIT (Heathrow only) FL150 by 5NM before SOPIT (Northolt only)
- BOVVA 1C** Arrival via M605 (FL70) to DTY VOR continue on DTY VOR R165 to WCO NDB then turn left onto WCO QDR 116° to BOVVA.
- BOVVA 1D** Arrival via KENET continue on 070° to BOVVA.
- BOVVA 1E** From LAM VOR maintain LAM VOR R276 to DONNA then turn right onto inbound holding track 138° to BOVVA.

**GENERAL INFORMATION**

- Standard Routes may be varied at the discretion of ATC.
- Cross SLPs or 3 min before holding facility at 250KIAS or less.
- En-route holding at HON VOR: During periods of congestion in the London TMA traffic from the north may be required to hold at HON VOR.
- As lowest level in BOVVA holding stack (7000) is above transition altitude, aircraft will be instructed by ATC to fly at the appropriate flight level.
- The routes shown also apply to aircraft inbound to Northolt and Denham.
- In order to provide airspace management flexibility during periods of congestion in the London TMA, STARs BOVVA 1D and BOVVA 1E are to facilitate the transfer of traffic between terminal holding facilities. These STARs are for use only as directed by ATC and must not be used for flight planning purposes.