

INSTRUMENT APPROACH CHART - ICAO

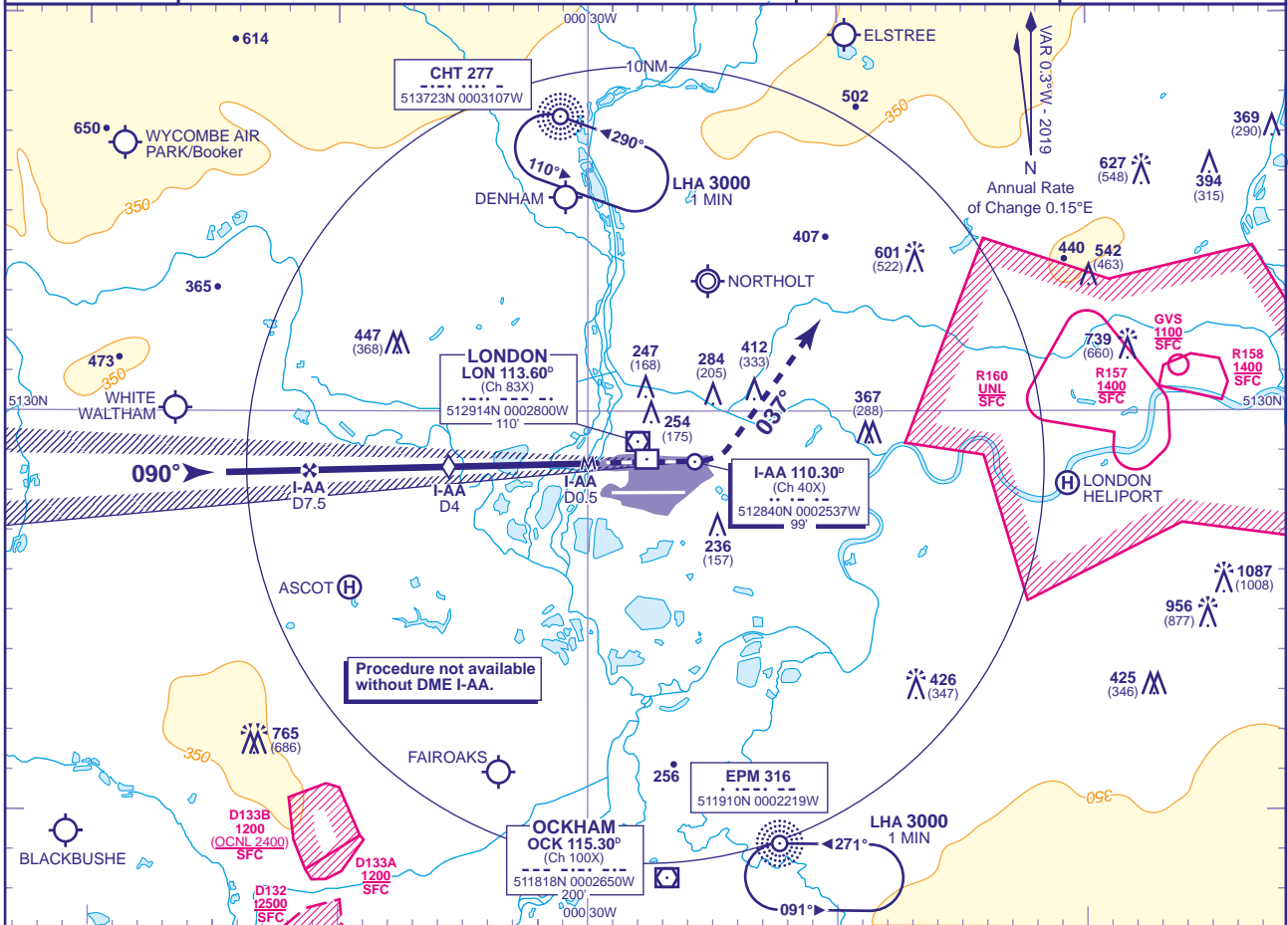
LONDON/HEATHROW  
LOC/DME I-AA  
RWY 09L  
(ACFT CAT A,B,C,D)



MSA 25NM LON VOR

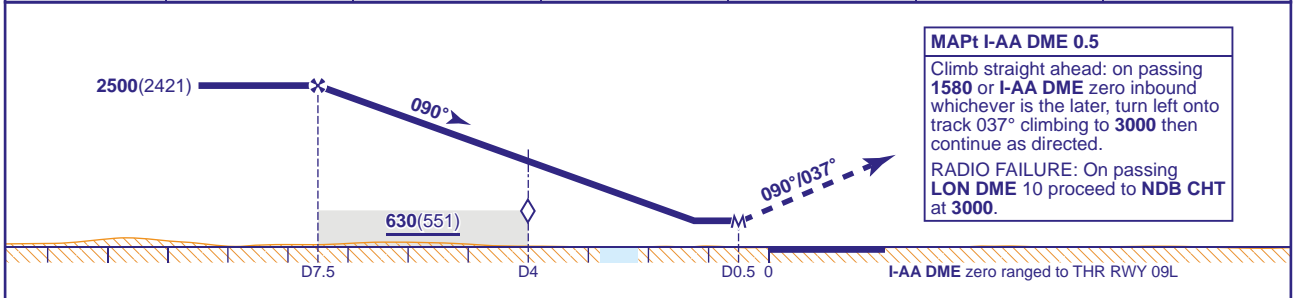
APP 119.730, 120.400, 127.525, 134.980	HEATHROW DIRECTOR	AD ELEVATION	83
TWR 118.505, 118.705, 124.475	HEATHROW TOWER	THR ELEVATION	79
RAD 125.625, 127.525	HEATHROW RADAR	OBSTACLE ELEVATION	1087 AMSL (1008) (ABOVE THR)
ATIS 128.080, 113.750, 115.100	HEATHROW INFORMATION	BEARINGS ARE MAGNETIC	

TRANSITION ALTITUDE  
**6000**



RECOMMENDED PROFILE Gradient 5.24%, 318FT/NM

DME I-AA	7	6	5	4 (SDF)	3	2
ALT(HGT)	2360(2281)	2040(1961)	1720(1641)	1400(1321)	1080(1001)	770(691)



Aircraft Category		A	B	C	D	Rate of descent	G/S KT	160	140	120	100	80
OCA (OCH)	Procedure	470(391)	470(391)	470(391)	470(391)			FT/MIN	850	740	640	530
VM(C)OCA (OCH AAL)	Total Area	750(667)	750(667)	850(767)	850(767)							

NOTES 1 Aircraft will normally be radar vectored from the STAR Holding/Initial Approach Fixes.  
2 All pilots must follow and adhere to recommended profiles.

CHANGE (10/19): APP FREQUENCY 119.725 AMENDED TO 119.730.