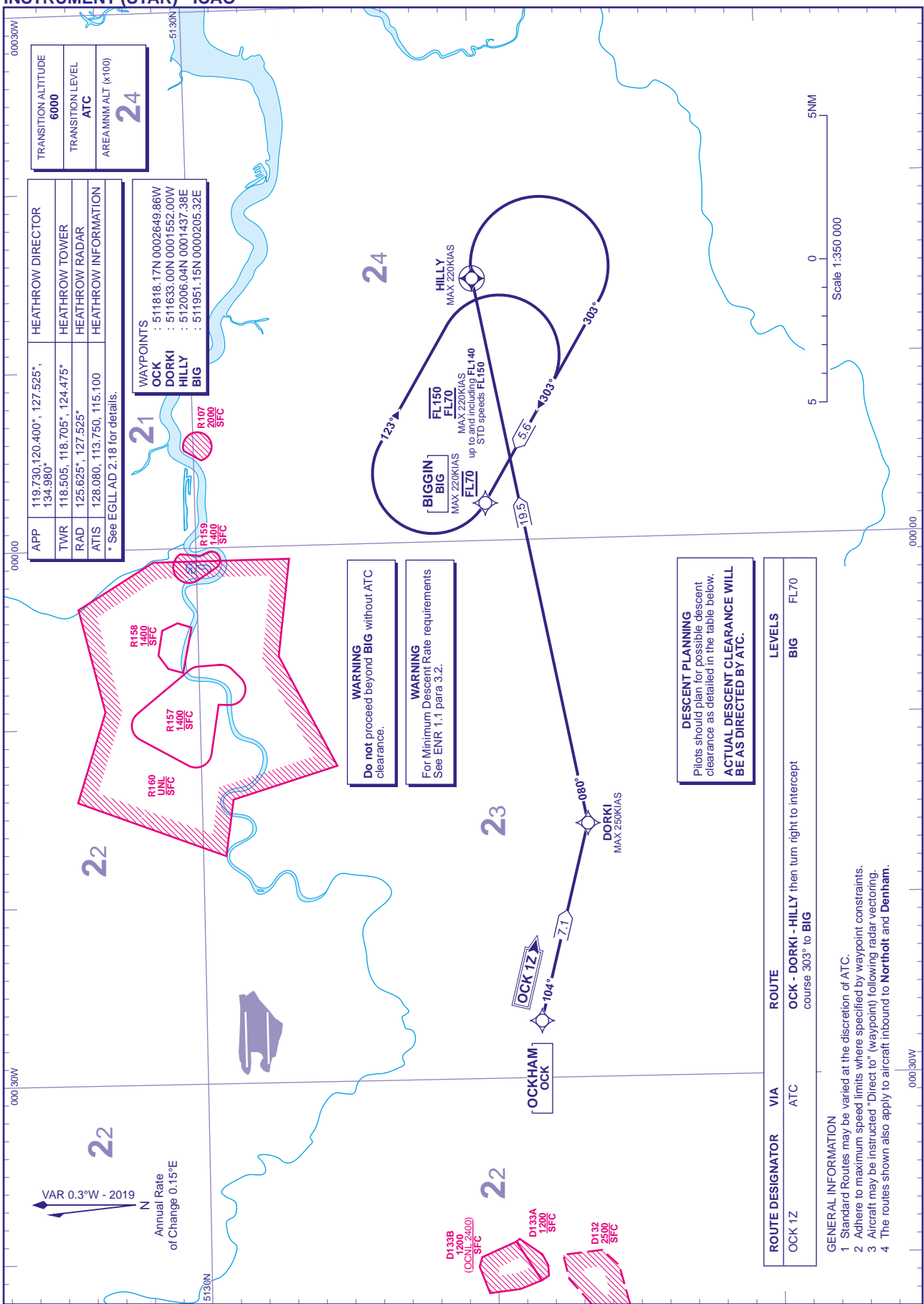


RNAV5 (DME/DME or GNSS)  
STANDARD ARRIVAL CHART -  
INSTRUMENT (STAR) - ICAO

DISTANCES IN NAUTICAL MILES  
TRACKS ARE MAGNETIC  
ALTITUDES AND ELEVATIONS ARE IN FEET

LONDON HEATHROW  
OCK 1Z



TRANSITION ALTITUDE	6000
TRANSITION LEVEL	ATC
AREA MNM/ALT (x100)	24

APP	119.730; 120.400°, 127.525°, 134.980°	HEATHROW DIRECTOR
TWR	118.505, 118.705°, 124.475°	HEATHROW TOWER
RAD	125.625°, 127.525°	HEATHROW RADAR
ATIS	128.080, 113.750, 115.100	HEATHROW INFORMATION

\* See EGLL AD 2.18 for details.

WAYPOINTS	
OCK	: 511818.17N 0002649.86W
DORKI	: 511633.00N 0001552.00W
HILLY	: 512006.04N 0001437.38E
BIG	: 511951.15N 0000205.32E

**WARNING**  
Do not proceed beyond BIG without ATC clearance.

**WARNING**  
For Minimum Descent Rate requirements See ENR 1.1 para 3.2.

**DESCENT PLANNING**  
Pilots should plan for possible descent clearance as detailed in the table below.  
**ACTUAL DESCENT CLEARANCE WILL BE AS DIRECTED BY ATC.**

ROUTE DESIGNATOR	VIA	ROUTE	LEVELS
OCK 1Z	ATC	OCK - DORKI - HILLY then turn right to intercept course 303° to BIG	BIG FL70

GENERAL INFORMATION

- Standard Routes may be varied at the discretion of ATC.
- Adhere to maximum speed limits where specified by waypoint constraints.
- Aircraft may be instructed "Direct to" (waypoint) following radar vectoring.
- The routes shown also apply to aircraft inbound to **Northolt** and **Denham**.

CHANGE (10/19): APP FREQUENCY 119.725 AMENDED TO 119.730. AREA MNM ALT REVIEW.

AERO INFO DATE 18 JUN 19

AD 2-EGLL-7