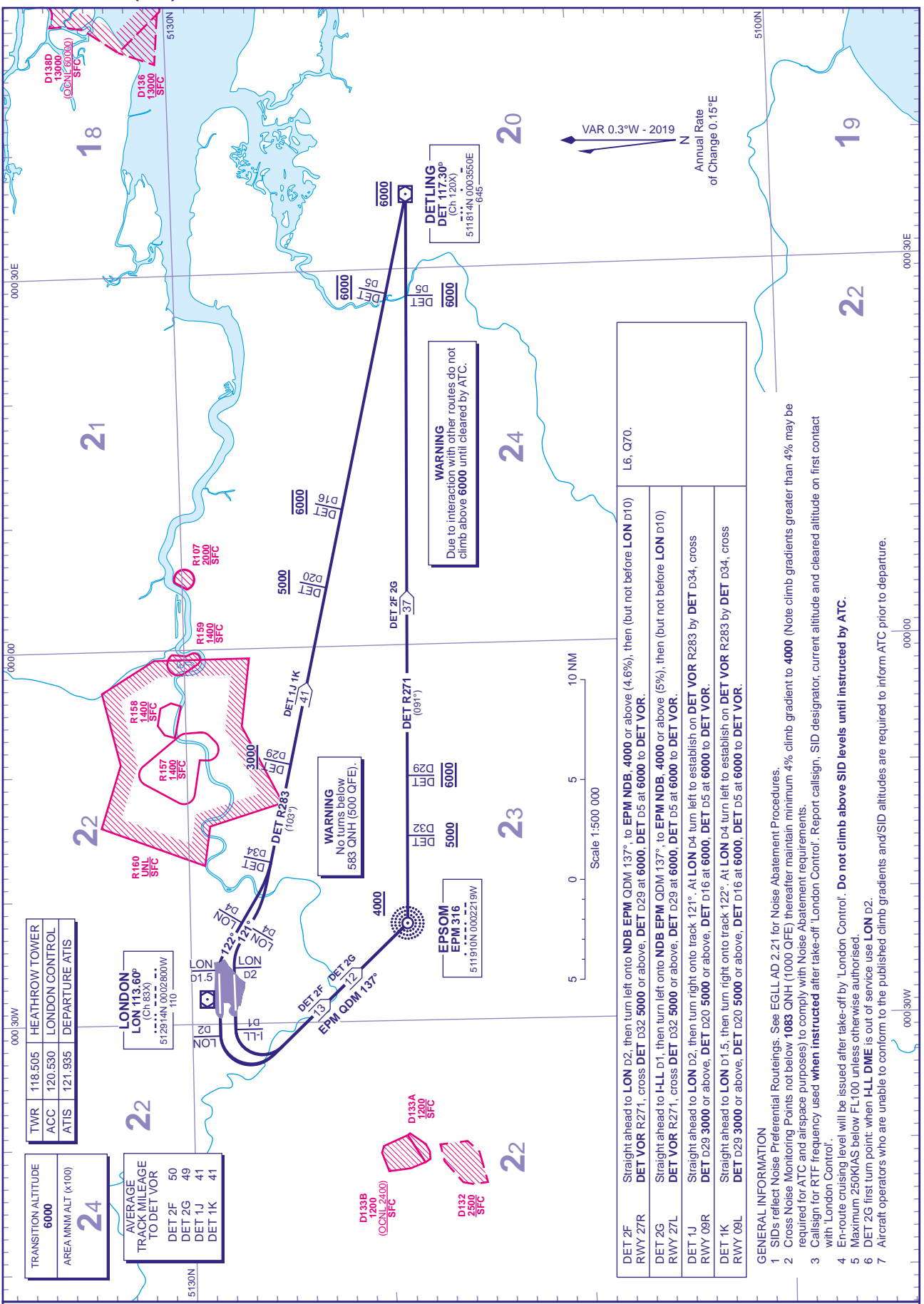


STANDARD DEPARTURE CHART - INSTRUMENT (SID) - ICAO

BEARINGS, TRACKS AND RADIALS ARE MAGNETIC
ALTITUDES AND ELEVATIONS ARE IN FEET

LONDON HEATHROW DET 2F 2G 1J 1K



TWR	118.505	HEATHROW TOWER
ACC	120.530	LONDON CONTROL
ATIS	121.935	DEPARTURE ATIS

LONDON
LON 113.60°
(Ch 83X)
512914N 0002800W

AVERAGE TRACK MILEAGE TO DET VOR	
DET 2F	50
DET 2G	49
DET 1J	41
DET 1K	41

EPSON
EPM 316
511910N 0002219W

WARNING
No turns below
583 QNH (500 QFE).

WARNING
Due to interaction with other routes do not climb above 6000 until cleared by ATC.

DET 2F RWY 27R	Straight ahead to LON D2, then turn left onto NDB EPM QDM 137°, to EPM NDB, 4000 or above (4.6%), then (but not before LON D10) DET VOR R271, cross DET D32 5000 or above, DET D29 at 6000, DET D5 at 6000 to DET VOR.	L6, Q70.
DET 2G RWY 27L	Straight ahead to I-LL D1, then turn left onto NDB EPM QDM 137°, to EPM NDB, 4000 or above (5%), then (but not before LON D10) DET VOR R271, cross DET D32 5000 or above, DET D29 at 6000, DET D5 at 6000 to DET VOR.	
DET 1J RWY 09R	Straight ahead to LON D2, then turn right onto track 121°. At LON D4 turn left to establish on DET VOR R283 by DET D34, cross DET D29 3000 or above, DET D20 5000 or above, DET D16 at 6000, DET D5 at 6000 to DET VOR.	
DET 1K RWY 09L	Straight ahead to LON D1.5, then turn right onto track 122°. At LON D4 turn left to establish on DET VOR R283 by DET D34, cross DET D29 3000 or above, DET D20 5000 or above, DET D16 at 6000, DET D5 at 6000 to DET VOR.	

GENERAL INFORMATION

- SIDs reflect Noise Preferential Routings. See EGLL AD 2.21 for Noise Abatement Procedures.
- Cross Noise Monitoring Points not below 1085 QNH (1000 QFE), thereafter maintain minimum 4% climb gradient to 4000 (Note climb gradients greater than 4% may be required for ATC and airspace purposes) to comply with Noise Abatement requirements.
- Call sign for RTF frequency used when instructed after take-off 'London Control'. Report call sign, SID designator, current altitude and cleared altitude on first contact with 'London Control'.
- En-route cruising level will be issued after take-off by 'London Control'. Do not climb above SID levels until instructed by ATC.
- Maximum 250KIAS below FL100 unless otherwise authorised.
- DET 2G first turn point: when HLL DIME is out of service use LON D2.
- Aircraft operators who are unable to conform to the published climb gradients and SID altitudes are required to inform ATC prior to departure.