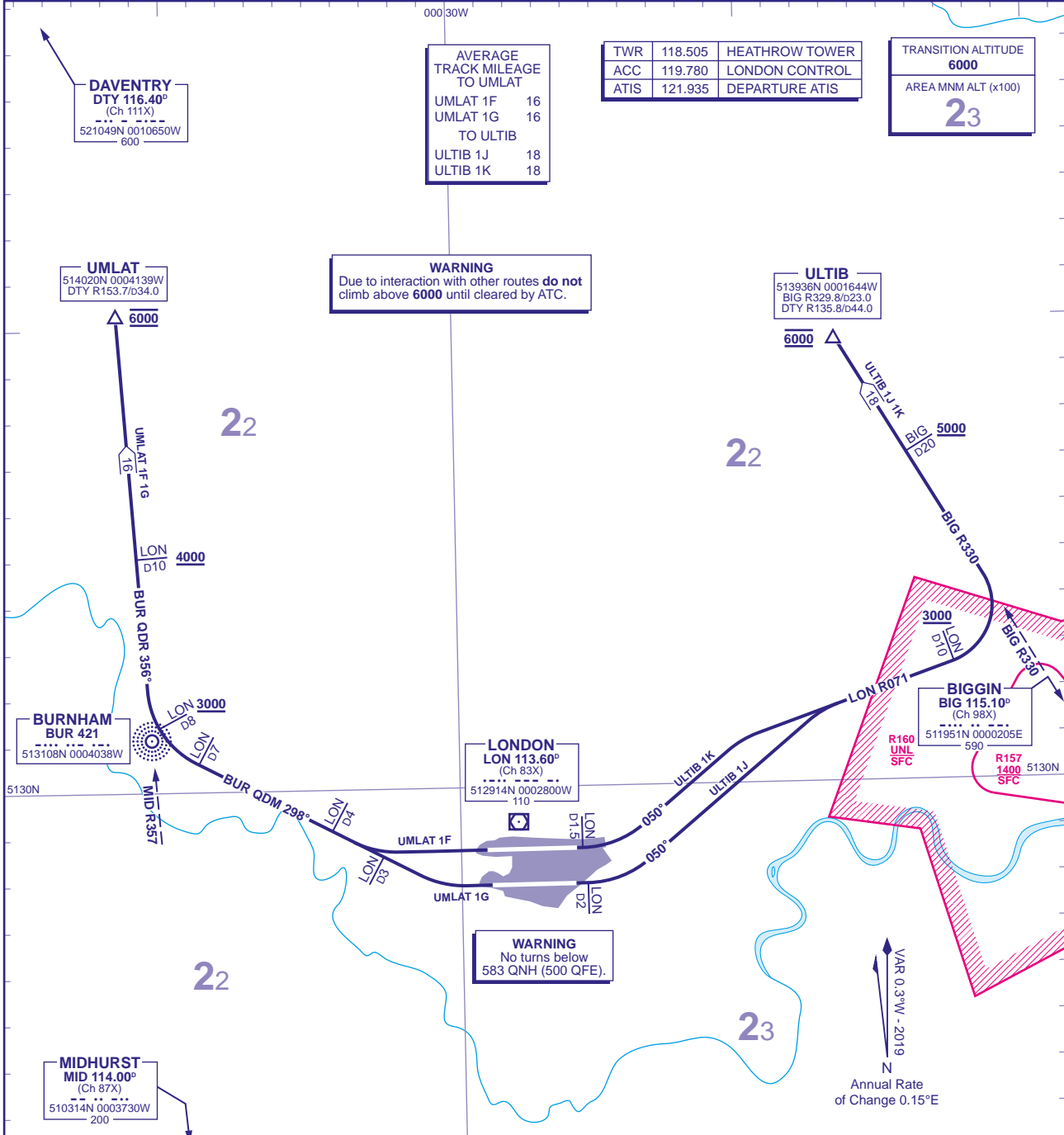


STANDARD DEPARTURE - INSTRUMENT (SID) - ICAO

DISTANCES IN NAUTICAL MILES
BEARINGS, TRACKS AND RADIALS ARE MAGNETIC
ALTITUDES AND ELEVATIONS ARE IN FEET

LONDON HEATHROW UMLAT 1F 1G ULTIB 1J 1K



AVERAGE TRACK MILEAGE TO UMLAT	
UMLAT 1F	16
UMLAT 1G	16
TO ULTIB	
ULTIB 1J	18
ULTIB 1K	18

TWR	118.505	HEATHROW TOWER
ACC	119.780	LONDON CONTROL
ATIS	121.935	DEPARTURE ATIS

TRANSITION ALTITUDE	6000
AREA MNM ALT (x100)	23

WARNING
Due to interaction with other routes **do not** climb above **6000** until cleared by ATC.

WARNING
No turns below **583 QNH (500 QFE)**.

UMLAT 1F RWY 27R	Climb straight ahead to be established on BUR NDB QDM 298° by LON D4 . At LON D7 turn right onto BUR NDB QDR 356° (MID VOR R357) , crossing LON D8 at or above 3000 , then continue to cross LON D10 at or above 4000 and cross UMLAT at 6000 .	Via T418 to WOBUS .
UMLAT 1G RWY 27L	Climb straight ahead to be established on BUR NDB QDM 298° by LON D3 . At LON D7 turn right onto BUR NDB QDR 356° (MID VOR R357) , crossing LON D8 at or above 3000 , then continue to cross LON D10 at or above 4000 and cross UMLAT at 6000 .	
ULTIB 1J RWY 09R	Climb straight ahead to LON D2 , then turn left onto track 050° to intercept LON VOR R071 , cross LON D10 at or above 3000 and turn left onto BIG VOR R330 , cross BIG D20 at or above 5000 and cross ULTIB at 6000 .	Via T420 to BUZAD .
ULTIB 1K RWY 09L	Climb straight ahead to LON D1.5 , then turn left onto track 050° to intercept LON VOR R071 , cross LON D10 at or above 3000 and turn left onto BIG VOR R330 , cross BIG D20 at or above 5000 and cross ULTIB at 6000 .	

- GENERAL INFORMATION**
- SIDs reflect Noise Preferential Routings. See EGLL AD 2.21 for Noise Abatement Procedures.
 - Cross Noise Monitoring Points not below **1083 QNH (1000 QFE)** thereafter maintain minimum 4% climb gradient to **4000** to comply with Noise Abatement requirements. (Note: Climb gradients in excess of 3.3% are necessary for ATM purposes.)
 - Call sign for RTF frequency used **when instructed** after take-off 'London Control'. Report call sign, SID designator, current altitude and cleared altitude on first contact with 'London Control'.
 - En-route cruising level will be issued after take-off by 'London Control'. **Do not climb above SID levels until instructed by ATC.**
 - Maximum 250KIAS below FL100 unless otherwise authorised.
 - Aircraft operators who are unable to conform to the published climb gradients/SID altitudes are required to inform ATC prior to departure.
 - For UMLAT 1F 1G RCF procedures see AD 2.22 6.
 - Expect first CPDLC Data Link Authority to be EGTG.

CHANGE (10/19): AREA MNM ALT REVIEW.