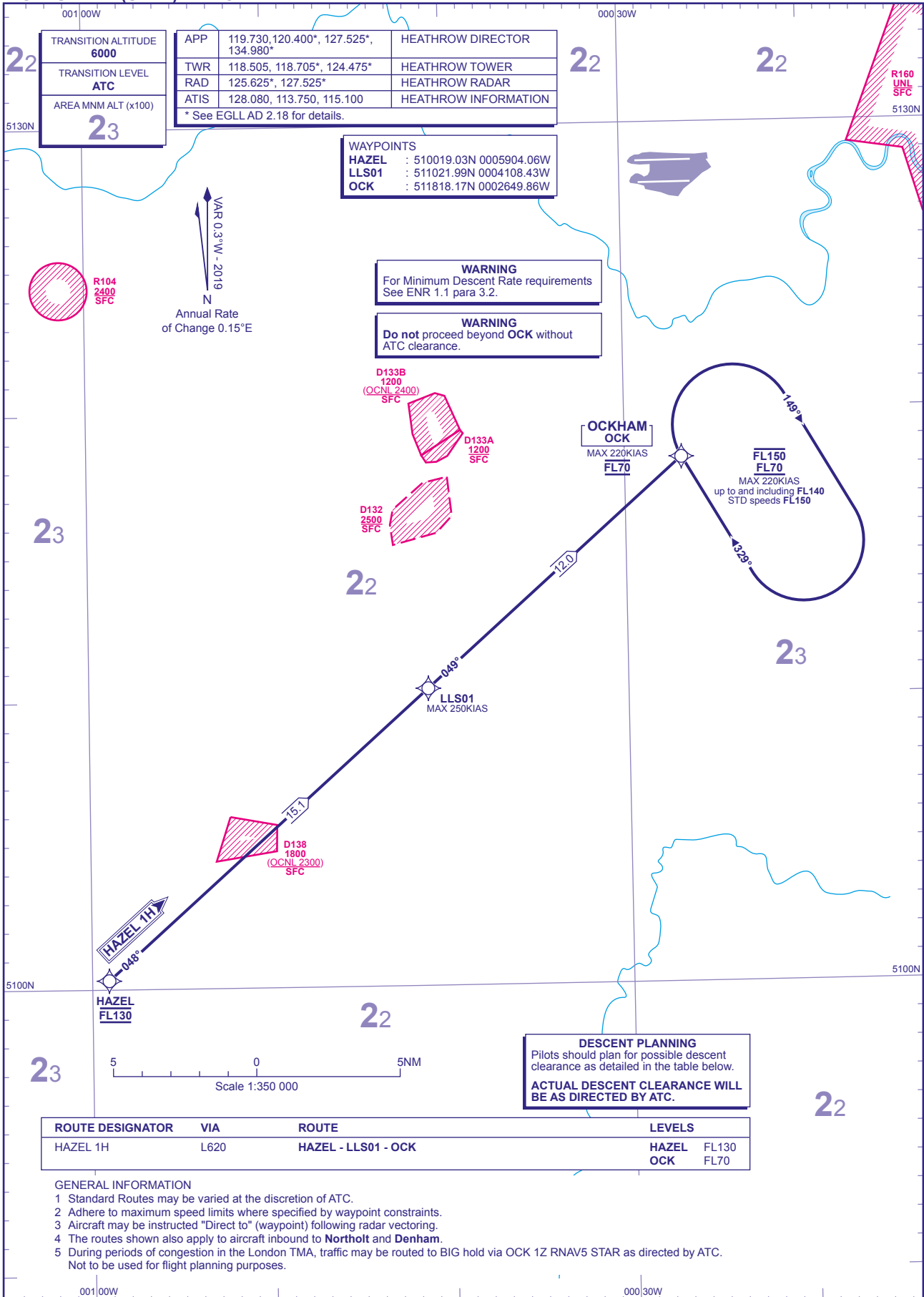


**RNAV5 (DME/DME or GNSS)
STANDARD ARRIVAL CHART -
INSTRUMENT (STAR) - ICAO**

DISTANCES IN NAUTICAL MILES
TRACKS ARE MAGNETIC
ALTITUDES AND ELEVATIONS ARE IN FEET

**LONDON HEATHROW
HAZEL 1H**



TRANSITION ALTITUDE 6000
TRANSITION LEVEL ATC
AREA MNM ALT (x100) 23

APP	119.730, 120.400*, 127.525*, 134.980*	HEATHROW DIRECTOR
TWR	118.505, 118.705*, 124.475*	HEATHROW TOWER
RAD	125.625*, 127.525*	HEATHROW RADAR
ATIS	128.080, 113.750, 115.100	HEATHROW INFORMATION

* See EGLL AD 2.18 for details.

WAYPOINTS	
HAZEL	: 510019.03N 0005904.06W
LLS01	: 511021.99N 0004108.43W
OCK	: 511818.17N 0002649.86W

WARNING
For Minimum Descent Rate requirements
See ENR 1.1 para 3.2.

WARNING
Do not proceed beyond OCK without
ATC clearance.

OCKHAM
OCK
MAX 220KIAS
FL70

FL150
FL70
MAX 220KIAS
up to and including FL140
STD speeds FL150

LLS01
MAX 250KIAS

HAZEL
FL130

DESCENT PLANNING
Pilots should plan for possible descent
clearance as detailed in the table below.
**ACTUAL DESCENT CLEARANCE WILL
BE AS DIRECTED BY ATC.**

ROUTE DESIGNATOR	VIA	ROUTE	LEVELS
HAZEL 1H	L620	HAZEL - LLS01 - OCK	HAZEL FL130 OCK FL70

GENERAL INFORMATION

- Standard Routes may be varied at the discretion of ATC.
- Adhere to maximum speed limits where specified by waypoint constraints.
- Aircraft may be instructed "Direct to" (waypoint) following radar vectoring.
- The routes shown also apply to aircraft inbound to **Northolt** and **Denham**.
- During periods of congestion in the London TMA, traffic may be routed to BIG hold via OCK 1Z RNAV5 STAR as directed by ATC.
Not to be used for flight planning purposes.