

INSTRUMENT APPROACH CHART - ICAO

LONDON/HEATHROW

RNAV (GNSS) Z RWY 09R
(ACFT CAT A,B,C,D)

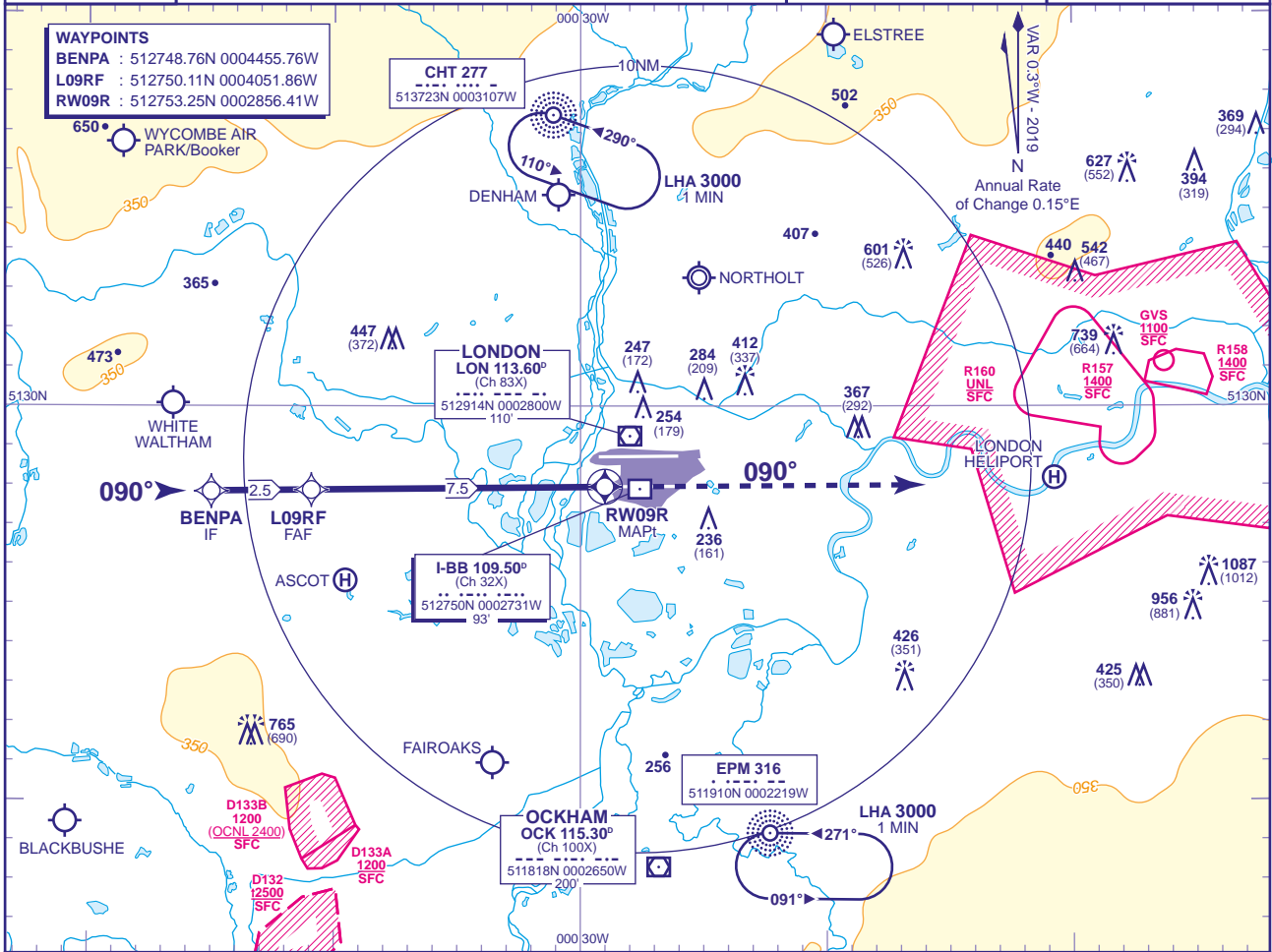
23
MSA 25NM ARP

APP 119.730, 120.400, 127.525, 134.980	HEATHROW DIRECTOR
TWR 118.505, 118.705, 124.475	HEATHROW TOWER
RAD 125.625, 127.525	HEATHROW RADAR
ATIS 128.080, 113.750, 115.100	HEATHROW INFORMATION

AD ELEVATION 83
THR ELEVATION 75
OBSTACLE ELEVATION 1087 AMSL (1012) (ABOVE THR)
BEARINGS ARE MAGNETIC

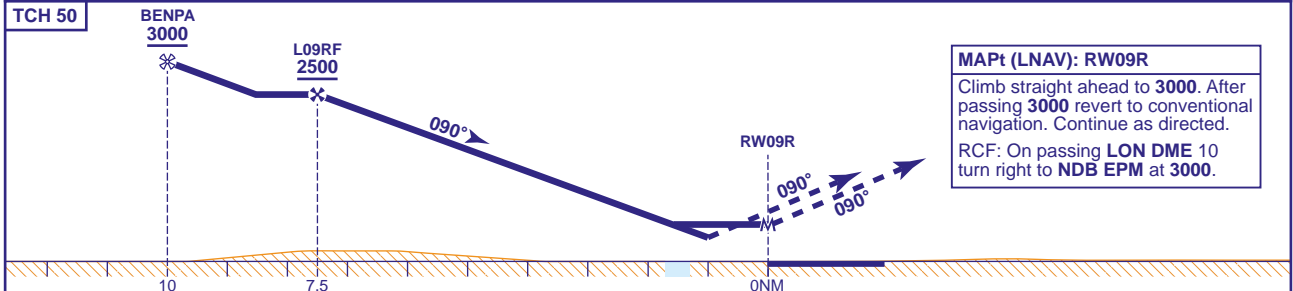
MIN TEMP -10°C
TRANSITION ALTITUDE 6000

WAYPOINTS
BENPA : 512748.76N 0004455.76W
L09RF : 512750.11N 0004051.86W
RW09R : 512753.25N 0002856.41W



RECOMMENDED PROFILE VERTICAL PATH ANGLE 3.0° (LNAV 5.24%), 318FT/NM

NM to RW09R	7	6	5	4	3	2
ALT(HGT)	2360(2285)	2040(1965)	1720(1645)	1400(1325)	1090(1015)	770(695)



Aircraft Category		A	B	C	D	Rate of descent	G/S KT	160	140	120	100	80
		LNAV/VNAV	500(425)	500(425)	500(425)		500(425)	FT/MIN	850	740	640	530
OCA (OCH)	LNAV	630(555)	630(555)	630(555)	630(555)							
	Total Area	750(667)	750(667)	850(767)	850(767)							

NOTES
 1 Pilots should 'Request RNAV Z Approach' on first contact with Heathrow Director.
 2 Aircraft will normally be radar vectored from the STAR Holding/Initial Approach Fixes.
 3 Missed Approach Procedure and RCF use conventional navigation aids and are not available without DME LON and NDB EPM.

CHANGE (10/19): APP FREQUENCY 119.725 AMENDED TO 119.730.