

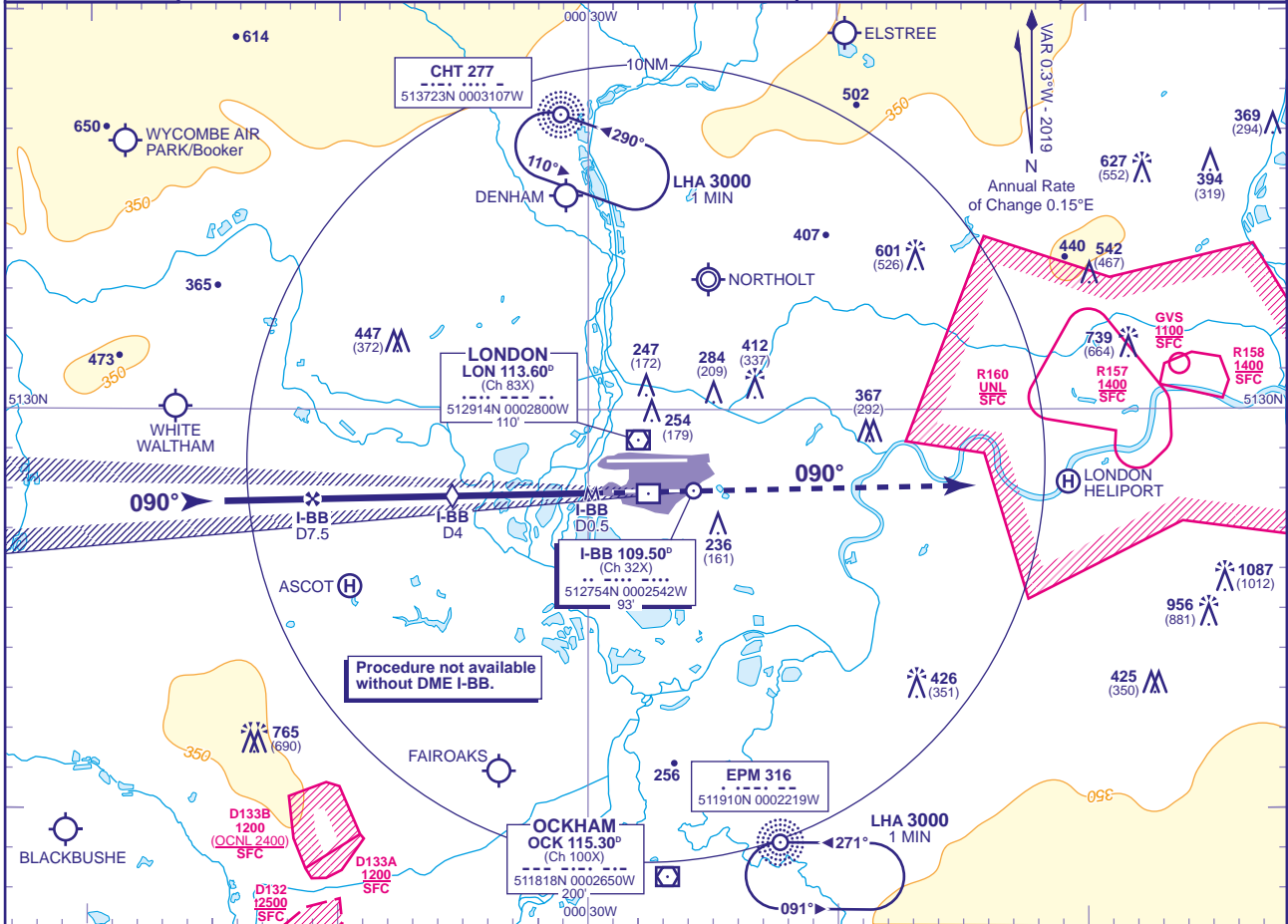
INSTRUMENT APPROACH CHART - ICAO

LONDON/HEATHROW LOC/DME I-BB RWY 09R (ACFT CAT A,B,C,D)



APP 119.730, 120.400, 127.525, 134.980	HEATHROW DIRECTOR	AD ELEVATION	83
TWR 118.505, 118.705, 124.475	HEATHROW TOWER	THR ELEVATION	75
RAD 125.625, 127.525	HEATHROW RADAR	OBSTACLE ELEVATION	1087 AMSL (1012) (ABOVE THR)
ATIS 128.080, 113.750, 115.100	HEATHROW INFORMATION	BEARINGS ARE MAGNETIC	

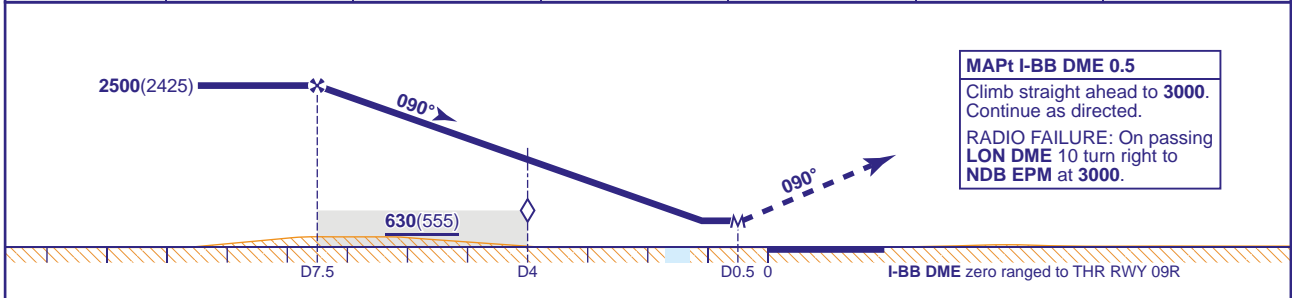
TRANSITION ALTITUDE
6000



Procedure not available without DME I-BB.

RECOMMENDED PROFILE Gradient 5.2%, 318FT/NM

DME I-BB	7	6	5	4 (SDF)	3	2
ALT(HGT)	2360(2285)	2040(1965)	1720(1645)	1400(1325)	1080(1005)	760(685)



Aircraft Category		A	B	C	D	Rate of descent	G/S KT	160	140	120	100	80
							FT/MIN	850	740	640	530	420
OCA (OCH)	Procedure	480(405)	480(405)	480(405)	480(405)							
VM(C)OCA	Total Area	750(667)	750(667)	850(767)	850(767)							

NOTE Aircraft will normally be radar vectored from the STAR Holding/Initial Approach Fixes.

CHANGE (10/19): APP FREQUENCY 119.725 AMENDED TO 119.730.