

23
MSA 25NM ARP

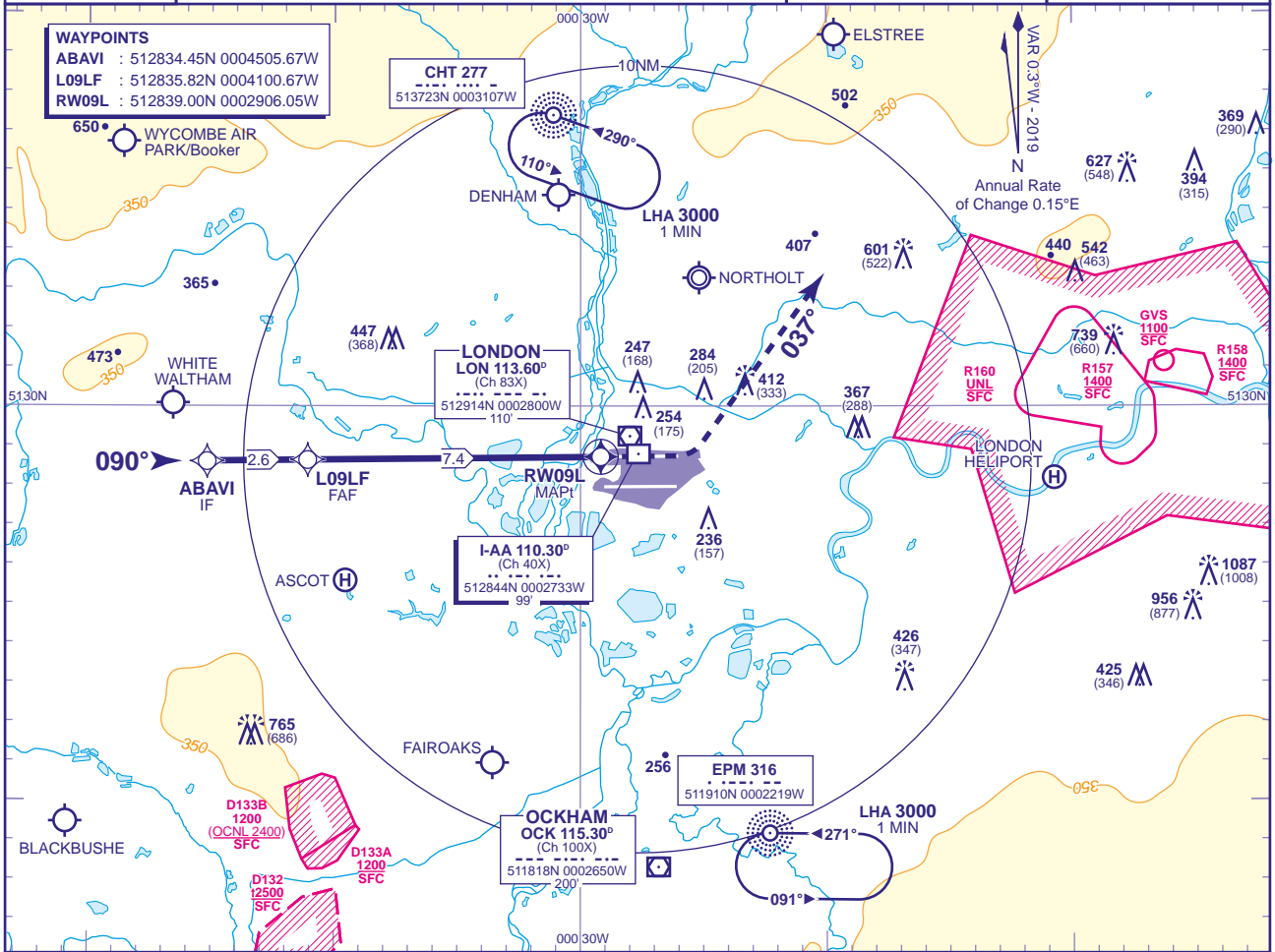
APP 119.730, 120.400, 127.525, 134.980	HEATHROW DIRECTOR
TWR 118.505, 118.705, 124.475	HEATHROW TOWER
RAD 125.625, 127.525	HEATHROW RADAR
ATIS 128.080, 113.750, 115.100	HEATHROW INFORMATION

AD ELEVATION	83
THR ELEVATION	79
OBSTACLE ELEVATION	1087 AMSL (1008) (ABOVE THR)
BEARINGS ARE MAGNETIC	

MIN TEMP -10°C
TRANSITION ALTITUDE 6000

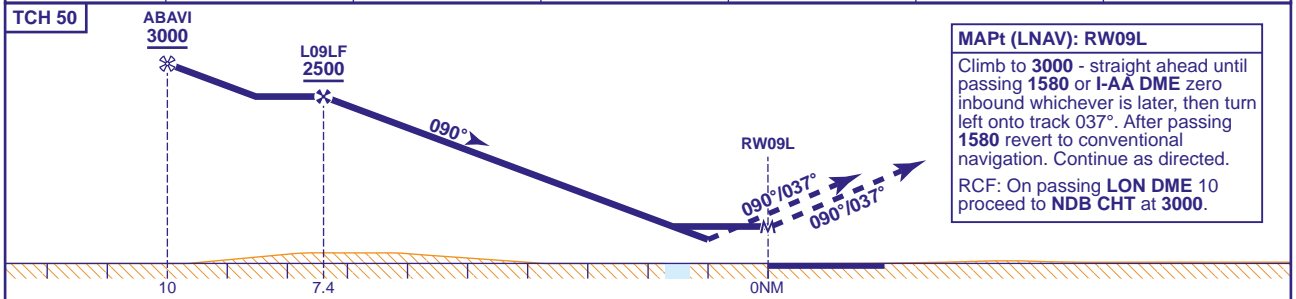
WAYPOINTS

ABAVI : 512834.45N 0004505.67W
 L09LF : 512835.82N 0004100.67W
 RW09L : 512839.00N 0002906.05W



RECOMMENDED PROFILE VERTICAL PATH ANGLE 3.0° (LNAV 5.24%), 318FT/NM

NM to RW09L	7	6	5	4	3	2
ALT(HGT)	2360(2281)	2040(1961)	1730(1651)	1410(1331)	1090(1011)	770(691)



MAPT (LNAV): RW09L

Climb to 3000 - straight ahead until passing 1580 or I-AA DME zero inbound whichever is later, then turn left onto track 037°. After passing 1580 revert to conventional navigation. Continue as directed.

RCF: On passing LON DME 10 proceed to NDB CHT at 3000.

Aircraft Category		A	B	C	D	Rate of descent	G/S KT	160	140	120	100	80
		LNAV/VNAV	570(491)	570(491)	570(491)		570(491)	FT/MIN	850	740	640	530
OCA (OCH)	LNAV	630(551)	630(551)	630(551)	630(551)							
	Total Area	750(667)	750(667)	850(767)	850(767)							

- NOTES**
- Pilots should 'Request RNAV Z Approach' on first contact with Heathrow Director.
 - Aircraft will normally be radar vectored from the STAR Holding/Initial Approach Fixes.
 - Missed Approach Procedure and RCF use conventional navigation aids and are not available without DME I-AA, DME LON and NDB CHT.