

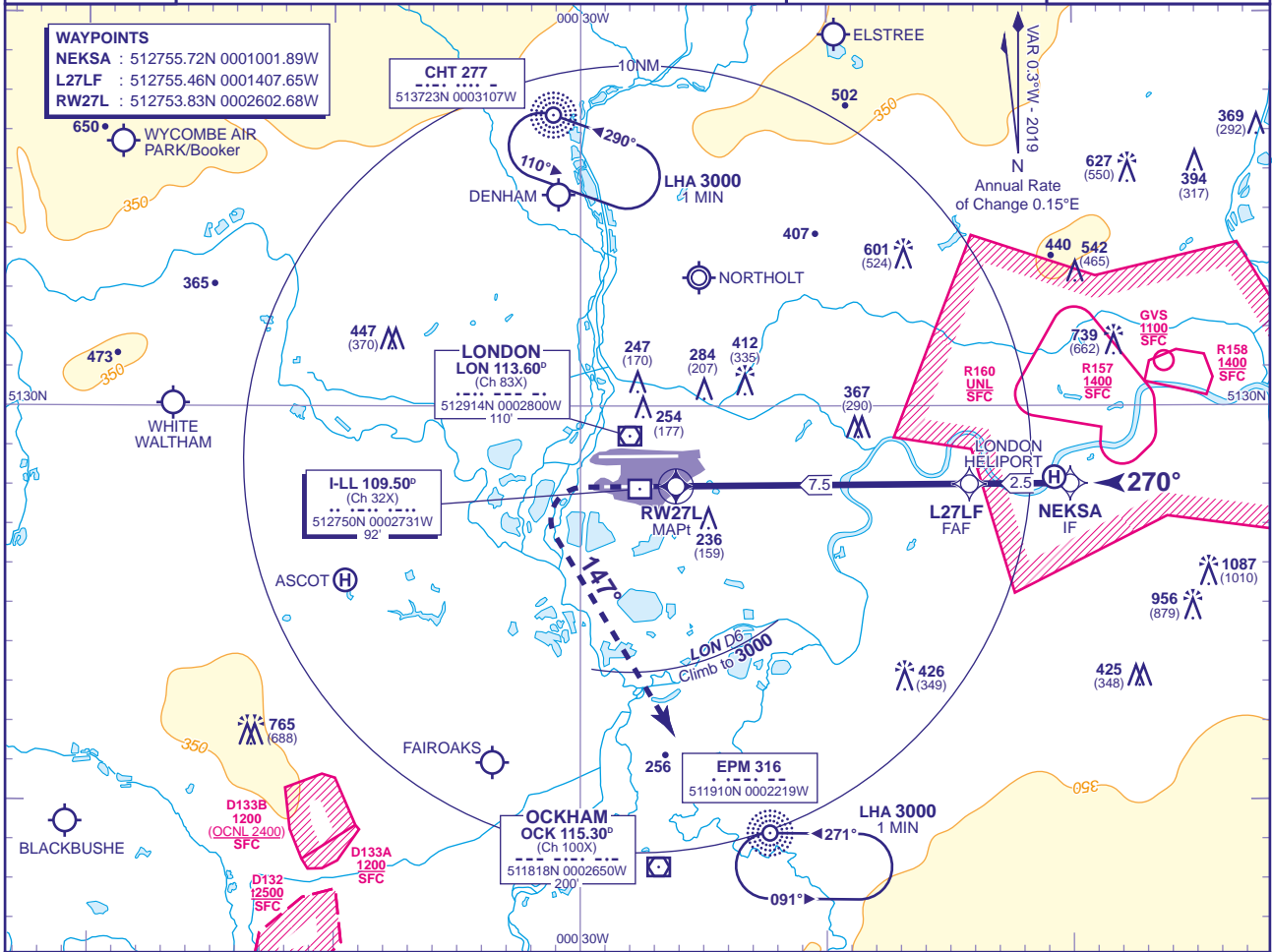
23
MSA 25NM ARP

APP 119.730, 120.400, 127.525, 134.980
TWR 118.505, 118.705, 124.475
RAD 125.625, 127.525
ATIS 128.080, 113.750, 115.100

HEATHROW DIRECTOR
HEATHROW TOWER
HEATHROW RADAR
HEATHROW INFORMATION

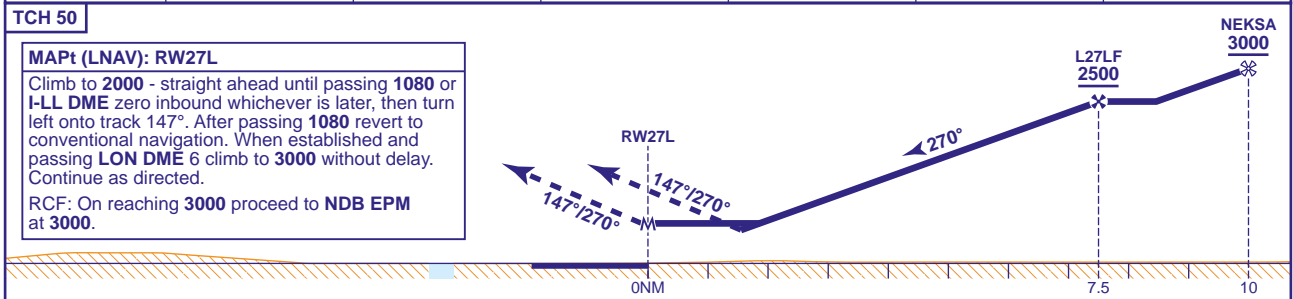
AD ELEVATION 83
THR ELEVATION 77
OBSTACLE ELEVATION 1087 AMSL (1010) (ABOVE THR)
BEARINGS ARE MAGNETIC

MIN TEMP -10°C
TRANSITION ALTITUDE 6000



RECOMMENDED PROFILE VERTICAL PATH ANGLE 3.0° (LNAV 5.24%), 318FT/NM

NM to RW27L	7	6	5	4	3	2
ALT(HGT)	2360(2283)	2040(1963)	1720(1643)	1410(1333)	1090(1013)	770(693)



Aircraft Category		A	B	C	D	Rate of descent	G/S KT	160	140	120	100	80
		LNAV/VNAV	LNAV	LNAV	LNAV		FT/MIN	850	740	640	530	420
OCA (OCH)	Total Area	750(667)	750(667)	850(767)	850(767)							

NOTES

- Pilots should 'Request RNAV Z Approach' on first contact with Heathrow Director.
- Aircraft will normally be radar vectored from the STAR Holding/Initial Approach Fixes.
- Pilots should not expect descent clearance below 4000 until 13NM from touchdown.
- Missed Approach Procedure and RCF use conventional navigation aids and are not available without DME I-LL, DME LON and NDB EPM.

CHANGE (10/19): APP FREQUENCY 119.725 AMENDED TO 119.730.

AERO INFO DATE 12 JUN 19

AD 2-EGLL-8-9