

INSTRUMENT APPROACH CHART - ICAO

BARRA
RNAV (GNSS)
RWY 25
 (ACFT CAT A,B)



AFIS 118.080

BARRA INFORMATION

AD ELEVATION 5

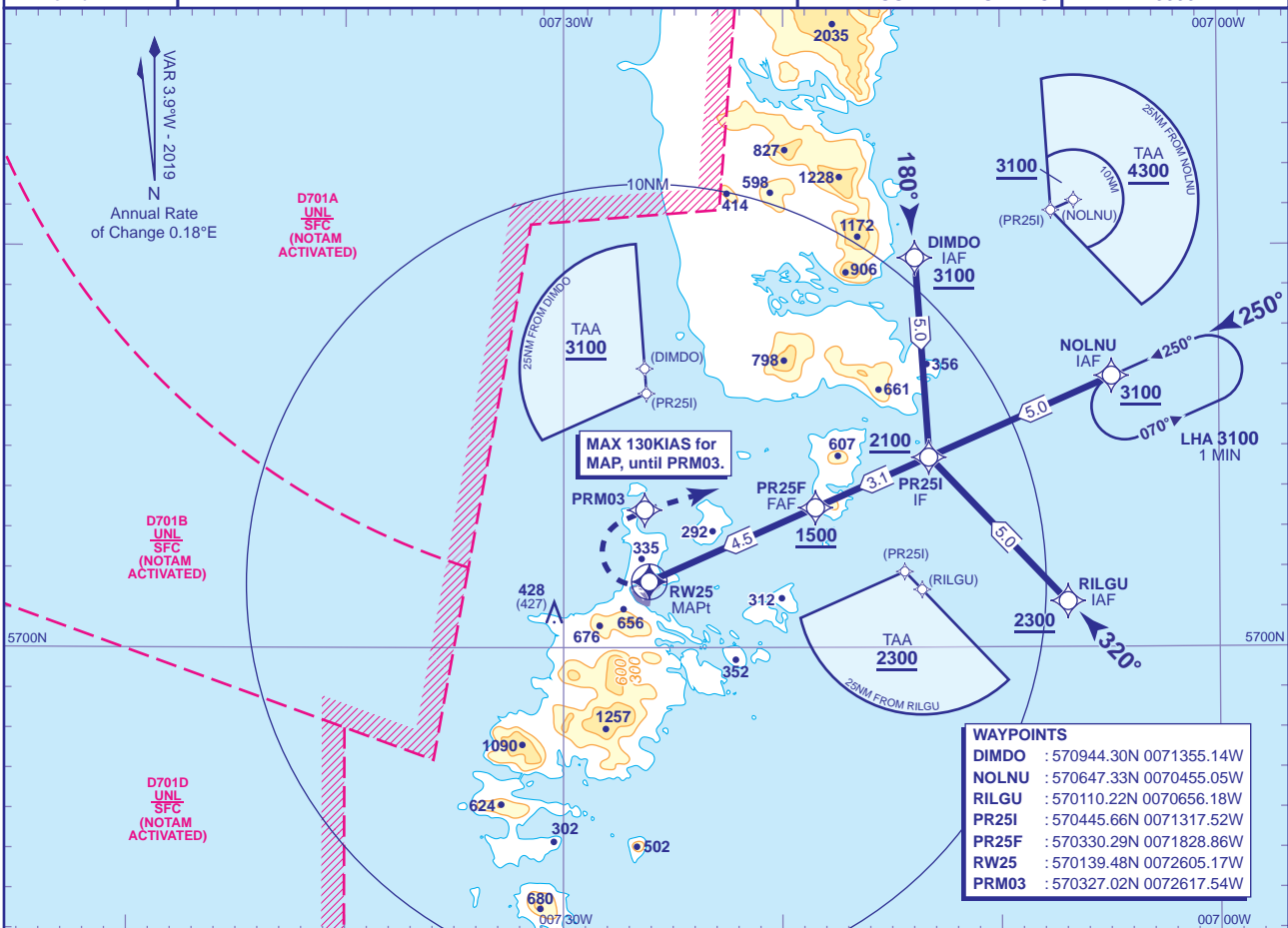
THR ELEVATION 1

OBSTACLE ELEVATION
 428 AMSL
 (427) (ABOVE THR)

BEARINGS ARE MAGNETIC

EGNOS CH 48465 E25A

TRANSITION ALTITUDE
3000

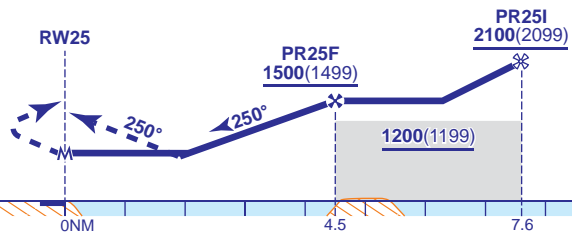


NM to RW25	4	3
ALT(HGT)	1320(1319)	1000(999)

TCH 40

MAPt RNAV (GNSS) RW25

Continuous climb to 3100.
 At RW25 turn right to PRM03.
 NOLNU to join the hold.
 MAX 130 KIAS until PRM03.



Aircraft Category		A	B	Rate of descent	G/S KT	160	140	120	100	80
OCA (OCH)	LPV	681(680)	690(689)		FT/MIN	850	740	640	530	420
	LNAV	830(829)	830(829)							
VM(C)OCA (OCH AAL)		Not Authorised								
Total Area		Not Authorised								
North of RWYs 250°M clockwise to 160°M		730(725)	730(725)							

NOTE 1 High ground lies in the vicinity of the missed approach area. Do not depart from procedure unless in VMC.
NOTE 2 Severe turbulence can occur when wind exceeds 30KTS at 2000 within the arc 160°T - 240°T.
NOTE 3 Use of RNAV procedure at this aerodrome restricted to Highlands and Islands Airports Ltd - Approved Operators only.
NOTE 4 Use of this RNAV procedure is strictly PPR from the aerodrome operator.
NOTE 5 Prior to commencing the procedure, pilots are to broadcast on AFIS 118.080 with flight details and intentions.

CHANGE (10/18): MAG VAR. AFIS FREQUENCY. STRAIGHT IN TAA AMENDED.