

INSTRUMENT APPROACH CHART - ICAO

BARRA

**RNAV (GNSS)
RWY 15
(ACFT CAT A,B)**



AFIS 118.080

BARRA INFORMATION

AD ELEVATION

5

THR ELEVATION

4

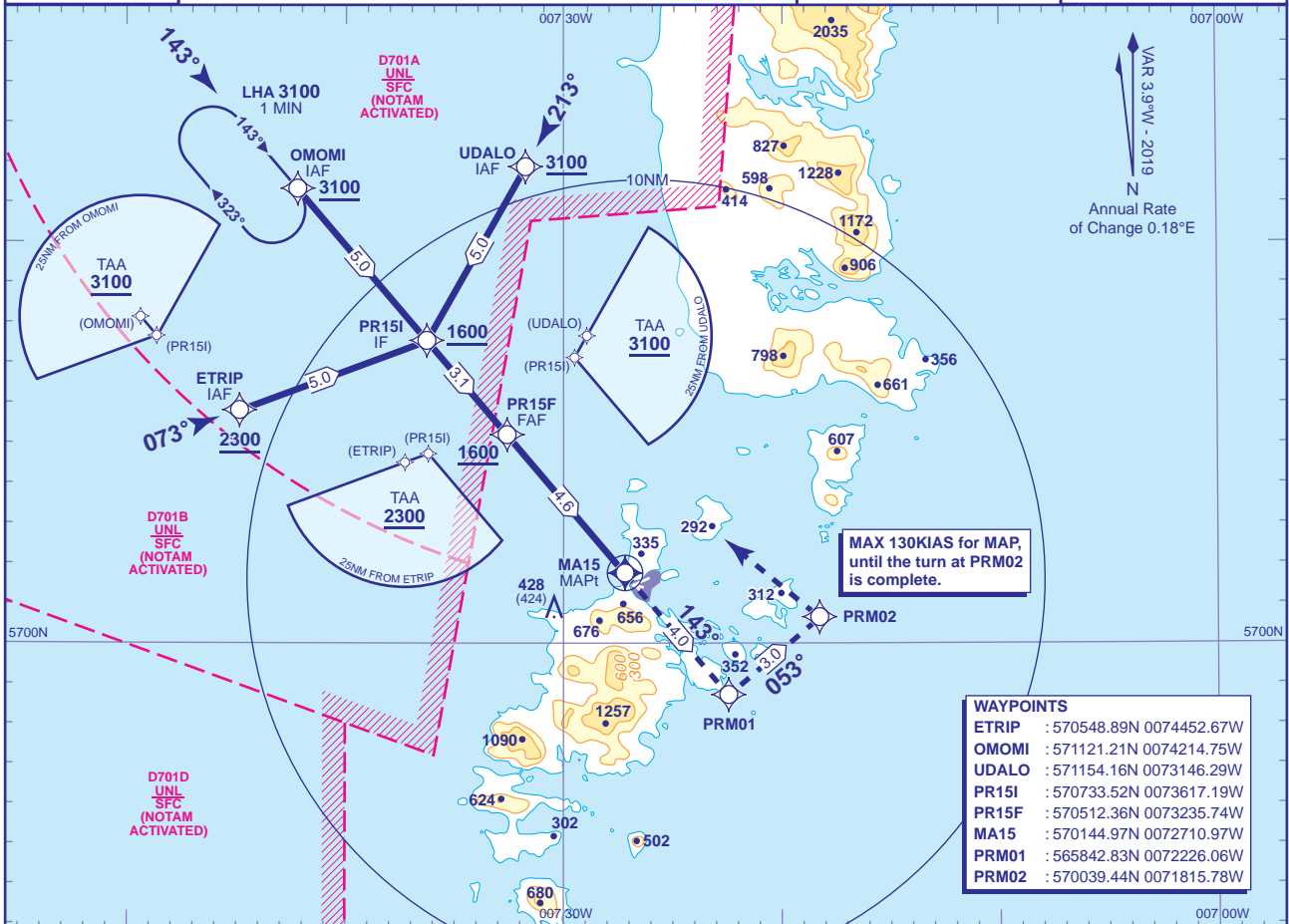
OBSTACLE ELEVATION

428 AMSL
(424) (ABOVE THR)

EGNOS CH 45341 E15A

TRANSITION ALTITUDE
3000

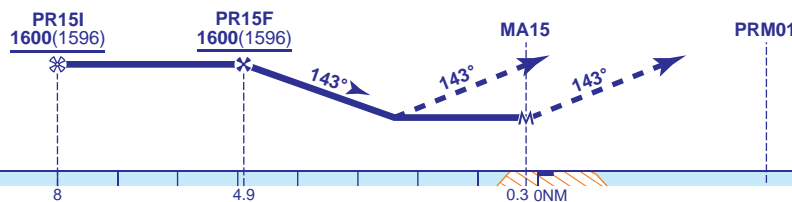
BEARINGS ARE MAGNETIC



RECOMMENDED PROFILE LPV - VERTICAL PATH ANGLE 3° (LNAV 5.24%), 320FT/NM

NM to MA15	4	3
ALT(HGT)	1410(1406)	1090(1086)

TCH 40



MAPt (MA15)
(0.3NM before THR RWY 15)

Continuous climb to 3100. Initially climb straight ahead to PRM01, then turn left to PRM02 and OMOMI to join the hold.

Aircraft Category		A	B	Rate of descent	G/S KT	160	140	120	100	80
OCA (OCH)	LPV	788(784)	798(794)		FT/MIN	850	740	640	530	420
	LNAV	800(796)	800(796)							
VM(C)OCA (OCH AAL)		Not Authorised								
Total Area		Not Authorised								
North of RWYs 250°M clockwise to 160°M		730(725)	730(725)							

NOTE 1 High ground lies in the vicinity of the missed approach area. Do not depart from procedure unless in VMC.
NOTE 2 Severe turbulence can occur when wind exceeds 30KTS at 2000 within the arc 160°T - 240°T.
NOTE 3 Procedure interacts with Danger Areas EG D701A and D701B. Procedure not available when Danger areas are active.
NOTE 4 Use of RNAV procedure at this aerodrome restricted to Highlands and Islands Airports Ltd - Approved Operators only.
NOTE 5 Use of this RNAV procedure is strictly PPR from the aerodrome operator.
NOTE 6 Prior to commencing the procedure, pilots are to broadcast on AFIS 118.080 with flight details and intentions.

CHANGE (10/18): MAG VAR. AFIS FREQUENCY. STRAIGHT IN TAA AMENDED. MAG TRACKS.